

WEATHER

	Max.	Min.	Precip.
Thursday, Feb. 21	39	32	0.65
Friday, Feb. 22	40	32	Trace
Saturday, Feb. 23	39	32	0.06
Sunday, Feb. 24	32	24	Trace
Monday, Feb. 25	25	4	0.08
Tuesday, Feb. 26	21	8	0.12
Wednesday, Feb. 27	10	0.04	

The Chelsea Standard

QUOTE

"A person who can't pay, gets another person who can't pay, to guarantee that he can pay."
—Charles Dickens.

ONE HUNDRED-TENTH YEAR—No. 38 18 Pages This Week Plus Supplement CHELSEA, MICHIGAN, THURSDAY, FEBRUARY 28, 1980 USPS 101-720 25c per copy SUBSCRIPTION: \$8.00 PER YEAR

Swim Team Close Second In Invitational

Chelsea swimmers finished a very close second to Monroe High in the Chelsea Invitational, held here Saturday, Feb. 23.

The final tally showed Monroe with 329 points and Chelsea with 324. In a distant third place was Marysville with 137. Lincoln had 128, Birmingham Country Day 101, Novi 63, and Dundee 49.

Meet records were set by Monroe in the 200 medley relay with a 1:47.902 time; Craig Wirtz, Chelsea, diving, 354.50; Mark McCloskey, Monroe, :53.825, 100 butterfly; McCloskey, 100 backstroke, :56.229; Don Steve, Monroe, 100 breaststroke, 1:05.825; and Chelsea's free relay team of Dave Mason, Mike Mason, Tom Gaunt and Scott Prohaska.

Chelsea school records were set by Wirtz in diving and Tom Gaunt in the 200 IM, 2:08.456.

Chelsea placed in a number of events. John Robbins, Shawn Pierson, Dave Nicola and Andy Weir were second in the medley relay; Scott Prohaska, 2nd, 200 free, 1:56.275; Sean Oxner, 5th, 200 free, 1:59.812; Paul Schumann, 11th, 200 free, 2:08.962.

In the 200 IM, Gaunt was first, Dave Mason second at 2:09.242, and Shawn Pierson seventh at 2:23.344.

In the 50 free, Dave Nicola was first at :23.535, Mike Mason finished at :24.454, and Charles Wiesner was 8th at :25.315.

Craig Wirtz was first in diving; Dave Mason, 2nd, 100 fly, :56.614; John Robbins, 3rd, 100 fly, 1:02.269; Kirk Hawks, 4th, 100 fly, 1:02.348; Andy Weir, 8th, 100 fly, 1:08.018. In the 100 free, Mike Mason was 4th at :53.896, and Craig Wirtz was 11th at :58.125.

In the 300 free, Scott Prohaska was second, 5:15.777; Sean Oxner, 3rd, 5:23.549; and Paul Schumann, 8th, 5:44.098. In the 100 backstroke, Tom Gaunt was second, :59.234; Kirk Hawks, 4th, 1:04.105; John Robbins, 5th, 1:04.243. Dave Nicola finished 3rd in the 100 breaststroke, 1:06.691. Shawn Pierson was 6th in that race, 1:09.935; and Charles Wiesner was 12th.

The free relay of Gaunt, Mason, and Prohaska finished first at 3:32.811.

"We swam pretty average in the prelims, but with only a couple of exceptions we swam great in the finals and almost pulled it out," Coach Larry Reed explained. "We swim these guys our first meet next year at their pool. It will be interesting."

Six Earn Conference Honors

Six Chelsea High school athletes have been named to the first, second and honorable mention all-league teams in the Southeastern Conference in basketball and volleyball.

Junior guard Jeff Dils was selected to the SEC all-league first team for his contributions to this year's Bulldogs.

Seniors John Dunn and Don Schrotenboer were chosen for the second-team, and Karl Albrecht appears as an honorable mention.

In volleyball, junior Sue Branham, team co-captain, made it to the second all-SEC team. Kelly Hense is an honorable mention.

(Continued on page four)

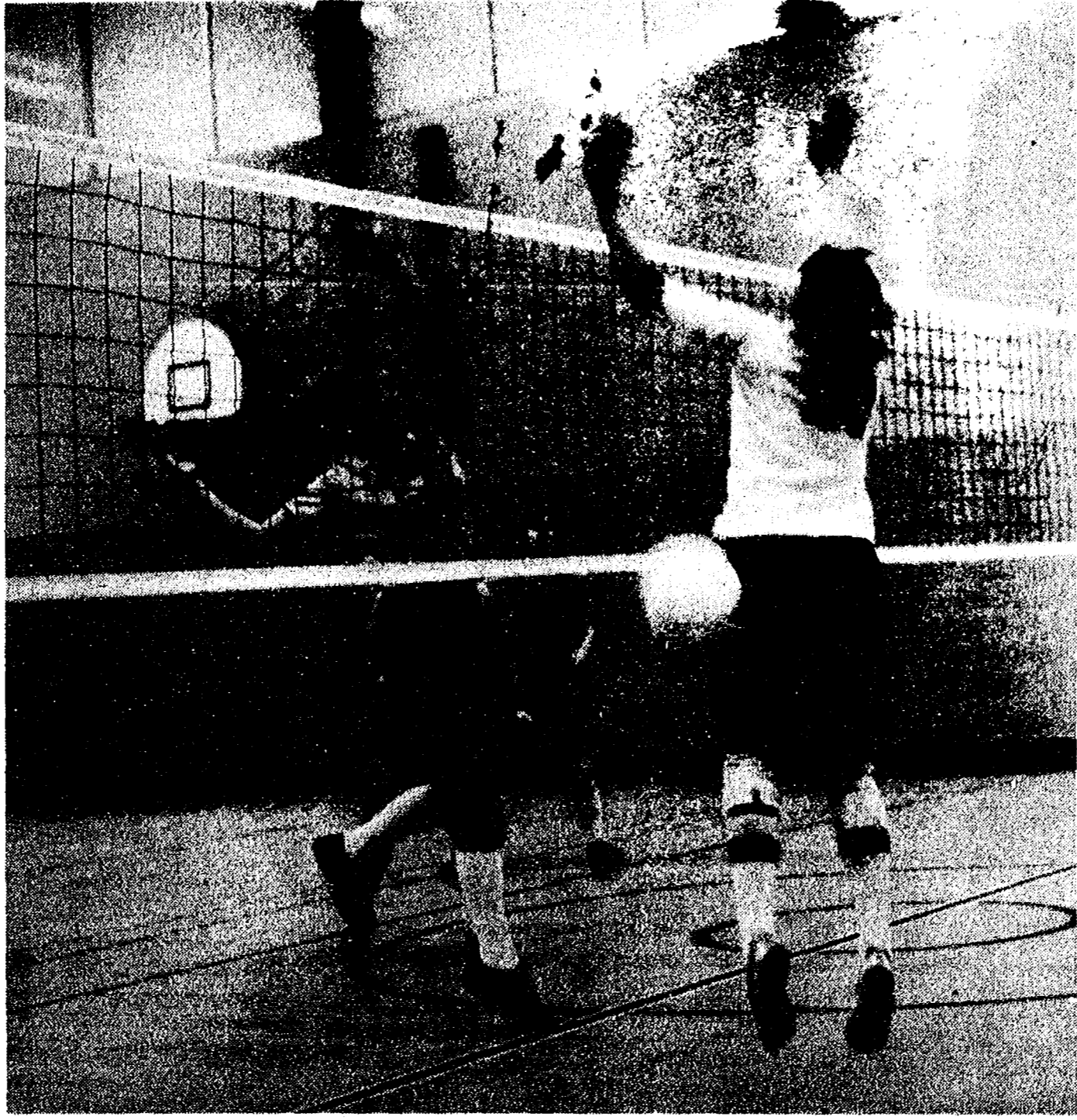
Wrestlers Tie for 3rd In SEC

The 1979-80 season has ended for Chelsea's varsity wrestlers, who tied for third in the SEC and placed fourth in the league meet.

Chelsea finished tied with Lincoln in the league with eight points. Saline won the league title with 20 points, Jackson County Western was second with 16, Milan was fifth with six and Dexter finished on the bottom with two.

At the league meet, Chelsea placed eight wrestlers on their way to a fourth place finish.

(Continued on page five)



SANDY BUSHWAY (50) and Molly Bacon (55) watch carefully as a Chelsea point goes by the Dexter defender on the opposite side of the net. Chelsea fell to Milan and Dexter in the SEC tournament but has another shot at the Drednaughts in district play.

Bulldog Cagers Show Class Against No. 1 Willow Run

If there was ever any doubt that Willow Run has one of the best basketball teams in the state, it was dispelled Tuesday night when the Flyers came to town.

After the contest, however, there was also little doubt that the Bulldogs are a very, very good team who maintained their own style of play and were within nine points of the top Class B team in Michigan at the end, 69-60.

"We had two objectives in the game," explained Chelsea Coach Robin Raymond after the contest. "We wanted to break their pressing defense and stop them from running the fast break. We knew we could be within 10 points if we did those things, and we were by and large successful."

Willow Run's fast break was indeed an awesome sight, as top Flyer scorers Bernardi Williams and Keith Jackson repeatedly powered their way to the basket for accurate lay-up shots.

Not allowing themselves to be led into an unfamiliar style of play, however, the Bulldogs tenaciously held their pattern of working the ball outside and searching for the good shot or pass.

"We aren't good enough to get in a running game with them," Raymond stressed. "Running is one of our team strong points, but we were playing a good team that also runs."

The Flyer defense held Chelsea to 24 points in the first half, led by Don Schrotenboer's eight. In the second half, however, Jeff Dils managed to beat the defense regularly inside, as well as forcing fouls with his aggressive play.

Dils scored 11 points in the third period and eight in the fourth to end up the game high scorer with 22. Ten of those points came on foul shots.

Karl Albrecht also came on strong for Chelsea in the final quarter, bucketing 10 points to help the Bulldogs outscore the opposition, 21-17, in the period.

Jon Riemenschneider was also in double figures with 10 points, Schrotenboer ended with eight, and John Dunn and Brad Knickerbocker had two each.

The Flyers boasted four players in double figures. Bernardi Williams was right behind Dils in points with 21, Keith Jackson had 15, Greg Thompson scored 14 and Johnnie Bailey had 13.

Despite the fact that Bailey and Jackson were in foul trouble, the Bulldogs played well enough for Willow Run Coach Ron Tarrant to go with his starters until the end.

In late foul trouble for Chelsea were Schrotenboer and Riemenschneider.

Although the game was very closely officiated and the packed crowds on both sides of the gym gave loud vocal support to the teams, Raymond expressed his pleasure at the poise and confidence displayed by the Bulldogs.

"I think our kids showed a lot of class tonight," Raymond pointed out. "There were a number of times where they could have mouthed off to the officials or questioned a call, but they kept it together and held their poise."

Nevertheless, nine points away from a victory is not a victory, and Raymond recalled some plays that could have made the difference.

Boys Swim Team Sports 13-1 Record

Chelsea's male swimmers finished a most successful season last week, with victories over Jackson, 102-63, and Willow Run, 58-25.

This gave the team a 13-1 record for the season, the one defeat coming from Class A Adrian, who has lost only to Ann Arbor teams from Huron and Pioneer.

In the Bulldogs' final two wins, the swimmers won impressively despite working out two times each day before the meets.

Against Jackson, the winners were Tom Gaunt, Dave Nicola, Dave Mason and Mike Mason, medley relay; Mason, Mason, Phil Hoffman and Scott Prohaska, free relay; Hoffman, 100 and 200 freestyle; John Robbins, 200 IM; Craig Wirtz, diving; Dave Mason, 100 fly; Scott Prohaska, 500 free; Tom Gaunt, 100 backstroke; and Shawn Pierson, 100 breaststroke.

In the contest with Willow Run, winning for Chelsea were Kirk Hawks, Gaunt, Robbins and Andy Weir in the medley relay; Prohaska, Mason, Mason and Weir in the free relay; Dave Mason, 200 free and 100 fly; Nicola, 200 IM and 200 free; Mike Mason, 500 free; and Robbins, 100 back.

The team's 13 records this year beat the 12 set by the Bulldogs last year. Steady improvement is evident. In 1977 the swimmers were 4-5, in 1978 11-5, in 1979 12-2, and in 1980 13-1.

Of 16 team members, 13 have qualified for the state meet. Going to that competition will be Tom Gaunt, Dave Nicola, Dave Mason, Mike Mason, John Robbins, Shawn Pierson, Kirk Hawks, Andy Weir, Scott Prohaska, Sean Oxner, Paul Schumann, Phil Hoffman and Craig Wirtz, a number of them in more than one event.

Crime Spree Ends Here for Young Trio

Two juveniles and an adult, wanted by four police departments for crimes ranging from breaking and entering to assault with an intent to commit murder, were apprehended by two sharp-eyed Chelsea police officers on Main St. last Thursday evening.

Patrolmen Richard Foster and Jack Orr apprehended the trio as they gawked at an medical emergency rescue being assisted by the officers on Main St.

According to Chief Robert Aeillo, Orr and Foster recognized the two juvenile boys and an adult woman, Patricia Bieriels, 18, from a Washtenaw County Sheriff's Department description and an alert to be on the lookout for the trio.

The arrests ended a two-day crime spree that ranged over two counties and resulted in charges

of breaking and entering and assault with intent to commit murder being brought against all three Ypsilanti residents. Bieriels, at 18, is charged as an adult, while the boys, aged 15 and 16, are charged as juveniles.

According to Washtenaw County Sheriff's Department Detective Paul Wade, the entire incident began Wednesday night, Feb. 20, when the two boys allegedly committed a breaking and entry in an Ypsilanti trailer park.

Reports indicate they then robbed a woman at gunpoint in the parking lot of an Ypsilanti restaurant, the Seas on Michigan Ave., and stole her car. Afterward, the pair picked up Bieriels at the trailer park and

(Continued on page five)

Chelsea vs. JCW In Tourney Play

It will be Chelsea going against Jackson County Western in district tournament basketball play next Wednesday evening, March 5, at Lumen Christi.

In the tournament draw Wednesday morning, Chelsea, Brooklyn Columbia Central and Jackson County Western each received a bye, meaning they will sit out the first round of play. Lumen Christi and Jackson Northwest match up in the first round on Tuesday, March 4, 7:30 p.m.

If Chelsea defeats Western, the Bulldogs will play the winner of the Thursday night contest between Columbia Central and either Lumen Christi or Northwest.

Chelsea Coach Robin Raymond was pleased with the draw, pointing

out that Lumen Christi, Chelsea's toughest opposition, will have to play three games for the district title, while the Bulldogs need only two wins.

Tickets for the Bulldogs' Wednesday night contest will be available Monday and Tuesday at the high school athletic office. Maps giving directions to Lumen Christi may also be picked up in the office.

Tickets for the Saturday night finals may be purchased at the Chelsea athletic office on Thursday and Friday of next week.

If Chelsea wins the district tournament, the Bulldogs will face the winner of the Novi district in the first round of regional play. Novi's district includes Pinckney, Dexter, Livonia Clarenceville, South Lyon and Farmington Harrison.



YEARLY PLANS for American Cancer Society fund-raising are being formulated now by the Chelsea chapter of the organization. Working on year-round project plans are board members, front, from left, Lenore Mattoff, Marie Colombo, Joyce Van Meer, Ruth Dils;

rear, Agnes Boylan, Mary Helen Brown, Neta Mills and Sherri Plank. Julie Oleszkowicz, second from left at the rear, is a representative of the county organization who aids local chapters of the society with fund-raising plans.

Several Events Planned To Benefit Cancer Fund

Planning began Tuesday, Feb. 25, for local fund-raising events to benefit the American Cancer Society.

The board of directors of the Chelsea chapter met at the home of co-chairperson, Lenore Mattoff, to discuss plans for the year's activities. Board members are Lenore Mattoff and Ruth Dils, co-chairpersons; Marie Colombo, secretary; Agnes Boylan, treasurer; Neta Mills and Sherri Plank, publicity; Mary Helen Brown, public education; and

Joyce Van Meer, member-at-large.

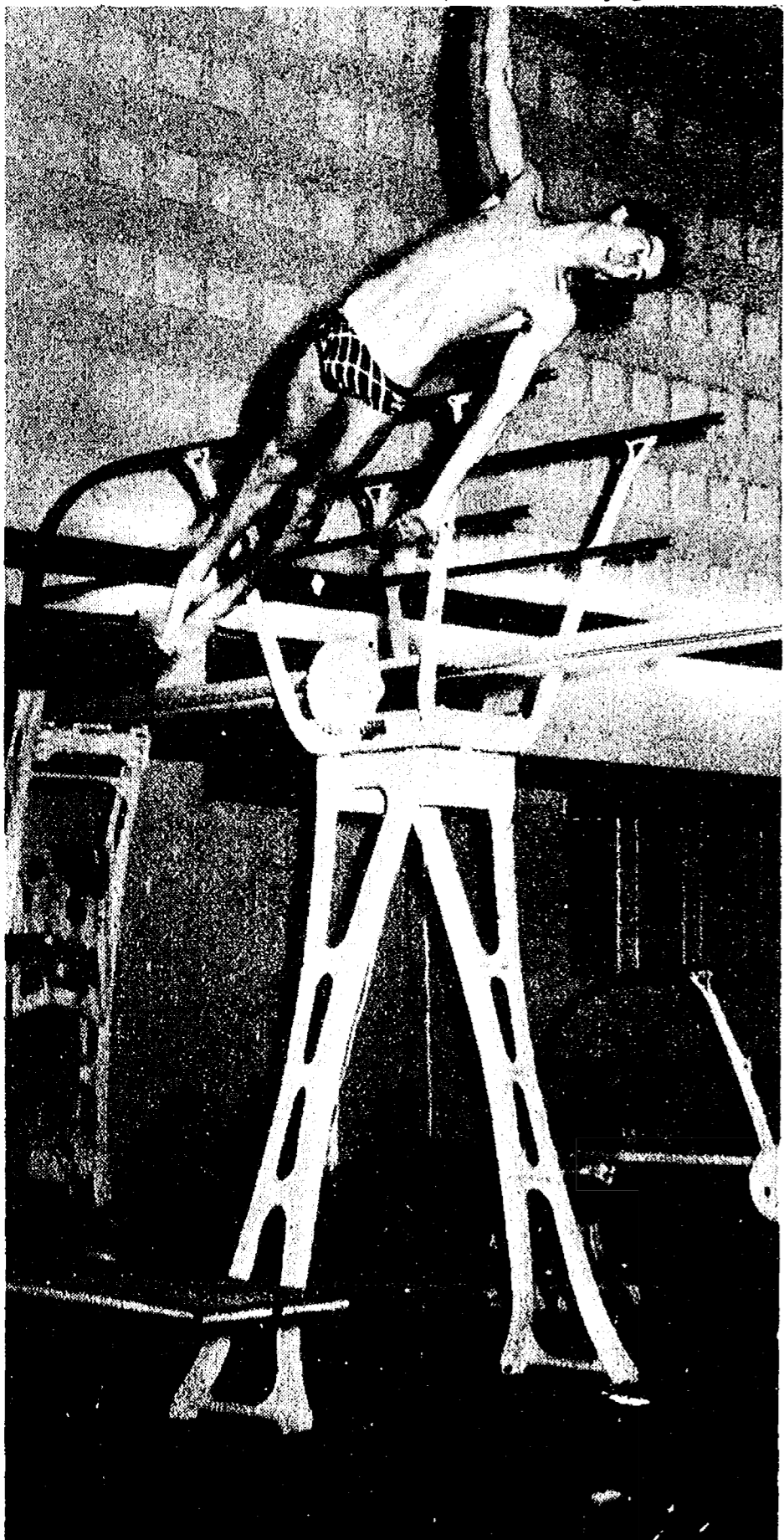
Meeting with the board was Julie Oleszkowicz, newly-appointed executive director of the Washtenaw County Chapter of the American Cancer Society. She assists all local chapters in the county.

March is kick-off month for the fund-raising events. Unlike past years, events will be scheduled throughout the year. Several are already well into the planning stages.

The county chapter will sponsor

both men's and women's golf, tennis and racquetball tournaments during the spring and summer months. An annual Bike-A-Thon held at the Chrysler Proving Grounds has been a popular event. This year it will be held in September as the "Super-Thon," and will include running as well as biking.

Other events being discussed are a white elephant sale, Quilt for Cancer, needlepoint workshop, and a bowl-a-thon. Any interested person may host a fund-raiser to benefit the American Cancer Society.



STATE MEET QUALIFIER: One of the league's strongest divers, Chelsea swim team member Craig Wirtz finished first in diving at last Saturday's Chelsea Invitational Swim Meet. Wirtz will dive for Chelsea in the upcoming State Meet, which ends competition for the Chelsea boys.

Established 1871 Telephone 475-1371
The Chelsea Standard
Walter P. Leonard, Editor and Publisher
Excellence Award By Michigan Press Association 1951-1952-1960-1964-1965-1966

Published every Thursday morning at 300 North Main Street, Chelsea, Mich. 48118, and second class postage paid at Chelsea, Mich., under the Act of March 3, 1879.

Subscription Rates (Payable in Advance)
In Michigan: Outside Michigan:
Six Months \$4.50 Six Months \$5.50
One Year \$8.00 One Year \$10.50
Single Copies \$.25 Single Copies \$.30

MEMBER NATIONAL ADVERTISING REPRESENTATIVE: MICHIGAN NEWSPAPERS, INC. 257 Michigan Ave. East Lansing, Mich. 48823

JUST REMINISCING
Items taken from the files of The Chelsea Standard

4 Years Ago . . . Thursday, March 4, 1976

Six unopposed Independent Party candidates are seeking office in the village election, scheduled for March 8 at Sylvan Town Hall.
CATS is an abbreviation for an elderly and adult handicapped transit system that will soon become a reality for area residents.
Recently elected president of the Washtenaw Farm Council at their annual meeting was Ralph McCalla of Chelsea.

Four Chelsea juveniles admitted to police last week that they had stolen 36 flares from Chelsea school buses about two weeks ago.
Chelsea Girl Scouts are seeking a helping hand from their dads by forming a "Fathers' Advisory Committee." Their goal is one father elected from each of the 12 Chelsea troops.
Leonard and Marian Centofanti have recently purchased the A&W drive-in on M-52 from former owner Jerry Smith.

14 Years Ago . . . Thursday, March 10, 1966

Chelsea will exchange village presidents with Daggett, which is located in the Upper Peninsula and has a population of 296, for mayor exchange day during Michigan Week.
The Chelsea Board of Education met Tuesday night and awarded the general contract for the South school and high school additions to Goodrich and Hazen of Adrian.
The Washtenaw County Road Commission has announced the retirement of Harold Wheeler, 121 Lincoln St., who has been employed by the county since July 9, 1940.
The village election promises to be one of the quietest in Chelsea history, with all nine candidates running on the Independent Party ticket. Only two, Donald Baldwin and William Storey, are not incumbents.

Please Notify Us In Advance of Any Change in Address

Howell Livestock Auction
Starts 1 p.m. Every Monday
Mason 676-3400
The Wise Owl Soys Ship to Howell Ph. (317) 548-3300 Bim Franklin
Hog Sale every Wed'y 9 a.m.
Market Report for Feb. 25
CATTLE—
Bulk Gd.-Choice Steers, \$67 to \$69
Few High Choice Steers, \$69-\$69.25
Gd.-Choice Heifers, \$65 to \$68
Fed Holstein Steers, \$60 to \$63
Ut.-Std., \$59 and down.
COWS—
Heifer Cows, \$58 to \$58
Ut.-Commercial, \$52 to \$56
Canner-Cutters, \$47 to \$54
Fat Beef Cows, \$46 to \$52
BULLS—
Heavy Bologna, \$60 to \$65
Light and Common, \$59 and down
FEEDERS—
400-600 lb. Gd.-Choice Steers, \$80 to \$90
600-800 lb. Good-Choice Steers, \$60 to \$75
300-600 lb. Good-Choice Heifers, \$65 to \$75
300-500 lb. Holstein Steers, \$70 to \$85
500-800 lb. Holstein Steers, \$60 to \$70
CALVES—
Prime, \$100 to \$110
Good-Choice, \$90 to \$100
Heavy Decreas, \$100 to \$125
Cull & Med., \$50 to \$70
Calves going back to the farm sold up to \$185
SHEEP—
Choice-Pilme, \$84 to \$65
Good-Utily, \$62 to \$64
Slaughter Ewes, \$25 to \$35
Feeder Lambs, all weights, \$65-\$75
HOGS (quotable)—
210 to 240 lbs., No. 1, \$37.75-\$38.30
200-250 lbs., No. 2, \$38 to \$37.75
Heavy Hogs, 250 lbs. up, \$30 to \$36
Light Hogs, 150 lbs. down, \$25-\$35
Pigs (quotable):
Fancy Light, \$30 to \$32
300-500 lbs., \$29 to \$34
500 lbs. and up, \$34 to \$35
Boars and Stags (quotable):
All Weights, \$28 to \$32
Feeder Pigs:
Per Head, \$15 to \$34
Est. 40 lb. pigs, \$28 to \$30
HAY—
1st Cutting, per bale, 35c to 80c
2nd Cutting, per bale, 75c to \$1.50
STRAW—
Per Bale, 60c to \$1.10
COWS (quotable)—
Tested Dairy Cows, \$700 to \$1,200
Tested Beef Type Cows, \$800-\$700

MICHIGAN MIRROR

By Warren M. Hoyt, Secretary, Michigan Press Association

Breakthrough May be Near On Worker's Compensation
Decades of proposals and debates have produced little success, but at last a breakthrough may be near on worker's compensation—a traditional problem area in Michigan business.

Business and labor have been at odds over reform of the system—setting benefits for workers injured in the line of performing their work duties—and, to date, each attempt has met failure as a result of breakdown in negotiations.

Workers' compensation coverage has increased at an alarming rate in Michigan, causing many businesses and industries to seek out other states for expansion of present facilities or the installation of new facilities.

As a result, both business and labor, along with the state's economy, have suffered.

A new workers' compensation proposal, developed and unveiled without the support of the state's major industrial business interests and the powerful United Auto Workers, has been announced and according to top supporters, will break the logjam in negotiations.

Although it only deals with about 35 percent of the total state-wide system, it has received the support of the AFL-CIO and retailer merchant groups.
However, the governor's office does not look at the package with much favor and a Republican legislator, Senator Richard Allen (R-Alma) has urged businesses to try to reform the system with an initiated law. Allen suggests there is little possibility of the Legislature approving any reform this year.

The package provides for an increase in maximum benefit levels to 100 percent of the state average weekly wage and provides retroactive increases to workers collecting benefits for past injuries.

Additionally, the plan announced by Senate Labor Committee Chairman David Plawecki (D-Dearborn Heights), proposed the elimination of the minimum benefit floor and provides for the coordination of benefits.

Plawecki predicted the overall cost of the changes in the system will not be increased by the package.
However, State Labor Director C. Patrick Babcock said over-all costs will increase by 4-10 percent with higher increases for any businesses that pay more than the state average weekly wage.

Plawecki allowed even though the proposal does represent to some extent the so-called "piecemeal" approach to workers' comp reform, which has been rejected in the past, it could open discussions in other areas of the system.

He said the major factor in arriving at the package was the willingness of small business and the AFL-CIO to work cooperatively.
Babcock said key items that are ignored in the proposal include retiree eligibility, statute of limitations and eligibility for heart and mental problems. "If they (the legislature) pass this, it is highly unlikely they will deal with any other issues in the future," he charged.

James Barrett of the Michigan State Chamber of Commerce, did not specifically oppose the plan but suggested a special Task Force on Workers' Compensation should carefully review the plan and make further recommendations.

A spokesman for Governor William G. Milliken said the package in its present form, is unacceptable because it fails to address the major concerns of business while it does address the concerns of labor.

Barrett complained the plan does not address the major concern of business of eliminating abuses such as eligibility for retirees.

Registration will begin at 6:30 p.m. and play will start at 7 p.m. Refreshments will be available. Bring your cribbage board and cards.

The tournament will run three consecutive Mondays and the playoff will be on March 31. If you have any questions call Ginny Wheaton at 475-7412.

Subscribe today to The Standard.

Uncle Lew from Lima Says:

DEAR MISTER EDITOR:

I like what the old rancher said when the salesman stopped aside the road where he was fixing fence. The stranger ask the way to so-and-so's place and the rancher laid it out fer him, creek by creek, ranch by ranch, turn by turn. "You must of lived here all your life," the salesman said as he thanked him fer directions. "Not yet I ain't," the rancher allowed.

Mister Editor, I hope I ain't lived out here on our little place all my life quite yet, but I've enjoyed and endured more years than I care to recall. I've seen more wonders in my one lifetime than most civilizations ever see, and most of em have been fer the better. Americans right now live better than any people since day one, took as a whole, and when you try to balance the scale, you find that even most of the bad started out with good in mind. I try not to let Ed Doolittle sway my thinking more than necessary at the sessions at the country store, but as I git older I worry about finding myself agreeing with Ed more.

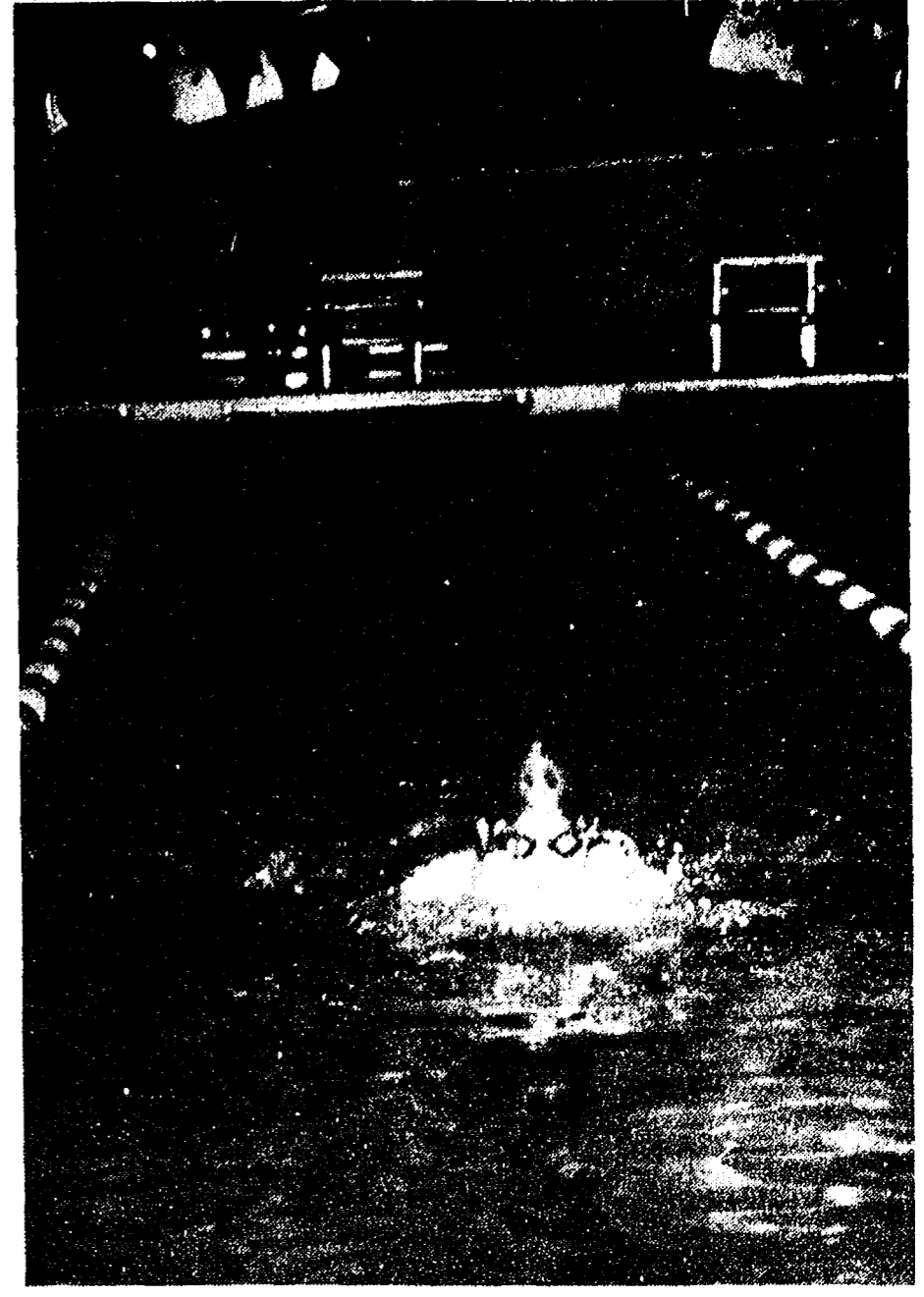
Practical speaking, I don't see no way to slow down Government, and the reason is that ever time we have a problem that's where we run fer help. In my lifetime, I've saw Government agencies git control of credit, crops, power, pork, prices, production, roads, rent and retirement, just to scratch the surface. Then I saw where most states had "sunset commissions" that was supposed to do away with agencies we don't need. That ray of hope faded quick when we learned that the regulating boards they want to kill are the ones that regulate themselves without the Government involved, like barbers, watchmakers and landscapers. Now it looks like there ain't nothing left to control after the law come down on how hot and cold we can be. The last thing, it looks like, is the hereafter, which could have somepun to do with hot and cold. I see where folks are having so much trouble with undertakers saying one thing and doing a cheaper thing til the Government again has been called to the rescue. I reckon the argument goes that the consumer in this case can't do better fer hisself

than his Government can do for him.

Natural, what's going to happen is what alius happens. The burying business is going to git so bogged down with regulations and red tape that St. Peter will have the devil's own time getting it untangled when the dearly departed arrives up yonder. We have come a long way from the burying of my boyhood, Mister Editor, and I'm not sure if this ain't one of them bad moves that started out good. Some good has come out of it, though. Back with do-it-ourselves funerals there was a two hour sermon at the church and another hour's singing at the grave. Now the operation is streamlined and there's no more than 10 minutes of preaching and singing put together.

I can't git near as upset over how I'm packaged fer the trip as about where I'm going. Fer sure if the politicians figger out how to tax the hereafter we got trouble, cause the power to tax is the power to destroy.

Yours truly, Uncle Lew.



SHAWN PIERSON placed in a number of events Saturday to boost Chelsea's boys swim team to a close second, behind Monroe, in their own invitational. With the regular season at an end, Pierson looks forward to competing in the State Meet on the medley relay and individual breaststroke.

North School 'Garage Sale' Raises \$360 for Playground Equipment

A "garage sale" held at North school last Saturday, raised \$360 for the installation of an asphalt play area in the kindergarten playground.

Dancer's, Heydlauff's, Thompson's and Dayspring Gifts was sold in the kindergarten rooms to raise the funds.

Merchandise donated by Chelsea Pharmacy, Grove Store,

Telephone your club news to 475-1371

NOW ON TUESDAY NIGHTS CHICKEN BUFFET
Thursday, Friday, Saturday open till 7
VISA master charge
NOW SERVING COCKTAILS IN OUR NEW BAR
our Famous Deep-Fried Chicken and SPECIAL BARBECUED CHICKEN
also mashed potatoes and gravy, dressing, and salad bar. Serving from 4:30-9:30
at the CAPTAINS TABLE
8093 MAIN ST., DEXTER PH. 426-3811

ATTENTION: FARMERS Who Raise Livestock! WE OFFER SLAUGHTER SERVICE and CUSTOM PROCESSING Cut and Wrapped to Your Specifications. DUNBAR'S DEXTER LOCKER 8083 Main St., Dexter 426-8466

THE INDEPENDENT PARTY PLATFORM
OPEN GOVERNMENT FOR ALL OF THE PEOPLE
NO POLITICAL TIES OR SPECIAL INTERESTS
CONSERVING YOUR TAX DOLLARS THROUGH WISE MANAGEMENT
RECREATION PROGRAM FOR ALL YOUTH
CONTINUE AND BETTER THE PROGRAMS FOR SENIOR CITIZENS
A TEAM EFFORT TO BRING GOOD GOVERNMENT TO VILLAGE OF CHELSEA
CHARLES RITTER PRESIDENT
JOE MERKEL III TRUSTEE
'SIS' (WAGNER) KANTEN TRUSTEE
LOREN KEEZER TRUSTEE
MARY HARRIS TRUSTEE
CHARLES WINANS II TREASURER
KATHERINE WAGNER ASSESSOR
LIBRARY BOARD
VOTE MARCH 10, 1980
Paid for by The Committee of Charles Ritter, Stephenie(Sis) Wagner, Joe Merkel & Loren Keezer 509 Maywood Chelsea, Michigan
The Committee of Mary Harris 415 Main Chelsea, Michigan
The Committee of Katherine Wagner 519 Conant Chelsea, Michigan
The Committee of Charles Winans 457 West Middle Chelsea, Michigan



Jaycettes Earn State Awards For Projects

A poster entered by Chelsea's Jaycee Auxiliary in the Michigan State Jaycee Auxiliary poster contest last November was awarded fourth place out of 40 entries, it was announced last week at the winter board meeting in Dearborn Heights.

Fashioned by Jaycette Nan Rowe, the three dimensional poster of balsa wood and metal illustrated the official theme, Jaycettes Building a Better Tomorrow.

A house of balsa wood featured doors that actually opened with miniature knobs and small ornate hinges. Figures were hand-painted plastic people and a garden was made of straw flowers. Sandpaper shingles adorn the structure and the shutters and insignia were carved in wood.

The house's front doors opened on a rainbow with the slogan, "A Better Tomorrow Together," which is President Carol Smith's theme this year for Chelsea.

Nine weeks of Rowe's time were used to construct the poster, which was awarded a plaque and certificate.

At the state meeting, Chelsea's Jaycettes were also given a plaque signed by Jerry Lewis which was awarded by the National Muscular Dystrophy Association for the Mile of Money project held in Chelsea last September.

Taking first in the poster contest was Madison Heights. Flushing was second, Clinton third, and Northville, fifth.



Mr. and Mrs. Donald A. Parker

Linda Hafner, Donald Parker Speak Vows at St. Mary Church

St. Mary's Catholic church in Chelsea was the setting Saturday, Feb. 9 for the wedding of Linda K. Hafner of Chelsea and Donald A. Parker of Jackson. Officiating at the ceremony was the Rev. Fr. Philip Dupuis.

The bride is the daughter of Mr. and Mrs. Don Hafner, 512 Chandler St. Parents of the bridegroom are Mr. and Mrs. Richard Parker, 11900 Harnwald, Munith.

Organ music for the ceremony was performed by Mrs. Marge Wiedmayer.

The bride was attired in a floor-length, white nylon gown with an empire waist, bottom ruffle and long train. Her veil was finger-tip length and she carried white roses, pink carnations, white stephanotis and baby's breath.

Matron of honor was the bride's sister, Janet Norris of Chelsea. She wore a burgandy floor-length halter dress with a matching cape jacket and carried two pink roses and baby's breath with burgandy and pink streamers.

Bridesmaids were friends of the bride Brenda Bauer, Barb Stahl and Teresa Roberts. They were gowned identically to the matron of honor and each carried one pink rose and baby's breath with pink streamers.

The bride's mother wore a long peach empire-waisted dress with a matching jacket. Mother of the bridegroom was attired in a long, pale green gown.

Flower girls were Stacy and Stephanie Norris, nieces of the bride, who wore pink, empire-waisted long dresses with burgandy lace and burgandy rib-

Final Cooking Class in Series Slated Monday

Final cooking class in the Chelsea Child Study Club "Culinary Collection" will be offered Monday, March 3, 8 to 10 p.m. at St. Paul United Church of Christ.

Lenore Mattoff will be presenting "Chocolate, Chocolate," and tickets are available at the door. All Proceeds go to Spaulding for Children.

Barrett-Hussey Engagement Told

Mr. and Mrs. Richard Irwin of Chelsea have announced the engagement of their daughter, Jill K. Barrett of Canton, to James Hussey of Southgate. The bride-elect is a 1974 graduate of Chelsea High school, attended Eastern Michigan University and Washtenaw Community College, and is presently employed as a dental assistant in Canton. Mr. Hussey is a 1970 graduate of Southgate schools and is employed by Bendix. A Sept. 20 wedding is planned.

Ruth Circle Notes

The February monthly meeting of the Ruth Circle, Methodist women's group, was held Feb. 20 in the Crippen Building of the Village Apartments.

Hostesses for the afternoon were Mrs. Bessie Buxton and Mrs. Marian Harper, who served refreshments from patriotic decorated tables.

Mrs. Esther Kirn gave devotions and Mrs. Florence Simmons gave the program on "God Can Use You."

GIRL SCOUTS

TROOP 247-

On Feb. 26 we celebrated World Association Day. We made folk art plates as a craft of Poland. We had a tasting party, Chinese chow mein noodles, Dutch Edam cheese, taco chips (Mexico) and looked at Origami paper folded things from Japan. Lisa Davis brought treats. We made clothespin Brownies and Girl Scouts for centerpieces for our father and daughter banquet. We played a game called "Ant." Lisa Taylor, scribe.

**Got the Sniffles?
Can't Shake the Flu?
VITAMIN C MAY HELP!**
Rivendell Natural Foods
3312 Alpine, Dexter Ph. 426-2549
(Across from the Farmers' Market)

You Read It First in The Standard!

*Lovelbirds...
THEY'RE THE
SONG OF LOVE.*

Tell her you care with these 14K yellow gold lovebird earrings, and our matching pendant, with diamonds. Lovelbirds, designed by Jewelmont...truly a gift of real affections.

DESIGN BY JEWELMONT

Winans Jewelry

CAROL'S CUTS
40 CHESTNUT
Monday, Wednesday and Friday
475-7094
Apts. Only
9:30 a.m. - 3:00 p.m.

DANCER'S 50% OFF SALE
Still in Progress!

Including men's coats, snowmobile suits, women's co-ordinate groups, and much more!

DANCER'S
Chelsea's Friendly Dept. Store

Hurry Up Spring WALLPAPER SALE

Save 15%-40%

Choose from over 5,000 beautiful patterns, textures, and designs - one perfect for every room in your home - Wall-Tex, Imperial, United, Astor, Josephson, Vicoa - all first quality wallcovering from America's leading manufacturers. EVERYTHING'S ON SALE!

Merkel HOME FURNISHINGS
OPEN MONDAY, THURSDAY AND FRIDAY UNTIL 9 P.M.

Save during our Western Guaranteed French Tergal Sale!

Enjoy great savings on Western guaranteed quality—imported French Tergal. Sheer elegance—seamless French Tergal is available in nearly 200 colors and styles to go with any decor. Plus, it carries a full 5-year guarantee against stretching, shrinking and fading. Our home decorating representatives will be happy to help you in selecting the appropriate window treatment, color, and style that will surely make a lasting impression in your home. Stop by now and save on Western Guaranteed French Tergal! Be sure to ask for your Free Tergal Designer Ideas Book II when you stop in.

Merkel HOME FURNISHINGS
Open Mon., Wed. and Fri. Until 9 p.m.
Phone 475-8621

photo depot
107 1/2 SOUTH MAIN ST.
CHELSEA, MICH. 48118
(313) 475-1687

Beautiful Wedding Photography
by Vernon Otto

This special offer is good for February through June Wedding Pictures!

The Best Deal in Town!
(72 poses to choose from)

- 1—Bride & Groom's package of 18 - 8x10's, including album.
- 2—Parent 4x5 albums, which include 12 - 4x5's each.
- 1—11x14 FREE PORTRAIT

All now for ONLY
Reg. \$344.00 **\$249.50**
Save \$94.50

Book your wedding now—
Limited dates open on schedule.



Rogers City Band Coming for Joint March 8 Concert

Chelsea band parents and other band boosters will be opening their homes to 65 members of the Rogers City High school band next week, when the group arrives in Chelsea to present a joint concert with the Chelsea Symphony Band.

Director of the Rogers City group, Ron Henderson, is a former Chelsea student teacher and looks forward to returning here to make music.

The combined concert will be presented Saturday, March 8 at 7 p.m. in the Chelsea High school auditorium. It is open to the public and is free of charge.

WCC Offers Session on Mental Health

As part of a continuing series to enable citizens to know more about service agencies in this area, Washtenaw Community College will present an information session about the Washtenaw County Community Mental Health agency on Thursday, Feb. 28 from 7-9 p.m. Special emphasis will be put on Foster Care homes and mental health services of the

John Boshoven will be the major presenter of the evening workshop which is open to the public at no charge. It will be held in Room 304 of the College's Ypsilanti Center at 210 W. Cross St. Advanced registration is requested by phoning WCC staff at (313) 482-2230.

Others in this series include a discussion of the Department of Social Services on Wednesday, March 12 from 7-9 p.m.; a discussion of the Michigan Employment Security Commission on Tuesday, March 18 from 7-9 p.m.



LIONS CLUB ROAST: On Tuesday, Feb. 5, the Chelsea Lions Club "roasted" eight Past District Governors of Lions District 11B1 at their regular semi-monthly meeting held at the Chelsea Community Hospital. This was the first time that any Lions Club in Michigan hosted and honored such a large group of past district officers. Each Past District Governor was introduced by a different member of the Chelsea club who proceeded to boast, roast, and toast

him. Enjoying the fun were seated left to right, Ken Lautzenheiser, Jerome; Paul King, Battle Creek; John Malley, Battle Creek; George Stoecker, Jackson; standing, Brent Michelson, President, Chelsea; Verne Shahan, Jackson; Jerry McCarthy, Battle Creek; Bob Myers, District Governor, Jackson; Ev Huttenlocher, Munith; Dick Tupper, Battle Creek; and Rand Overdorf, master of ceremonies, Chelsea.

Conference Honors . . .

(Continued from page one)

Winning recognition on the first volleyball team were Helen McDonald of Dexter, Kim Peyton and Renea Gregerson of Jackson County Western, Tami Malocha and Vickie Waring of Saline, and Milan's Linda Armstrong.

Taking the other four places on the all-SEC first basketball team together with Jeff Dils are Saline's John Kendzicky (unanimous choice), John Gruden of Milan (unanimous), Chip Skinner of Saline and Dexter's Jim Vaughan.

Senior Citizen Nutrition Program MENU and ACTIVITIES

Week of Feb. 29-March 6
Friday—Sadie Hawkins Day Celebration. Baked fish with egg sauce, Pappy's O'Brien potatoes, Lil Abner's stewed tomatoes, Dog Patch cornbread with margarine, Daisy Mae's fresh fruit, beverage. Recorder, 10 a.m.; Bible, 11 a.m.

Monday—Swedish meatballs, baked potato, buttered peas and carrots, honey-date muffins and margarine, chilled fruit cup, beverage. Arts and crafts, 10:30 a.m.; exercise, 11:15 a.m.

Tuesday—Baked cheese sandwich, lyonnaise green beans, tossed salad and dressing, assorted breads and margarine, lime whip, beverage.

Wednesday—Roast turkey roll and gravy, parsley whipped potatoes, buttered spinach, wheat bread and margarine, seasonal fresh fruit, beverage. Game, 10:30 a.m.

Thursday—Chili con carne, chilled orange juice, pear-grated cheese salad, hot biscuits and margarine, brownies, beverage.

LOOK OUT! Sandy Bushway, left, Chelsea volleyballer, intimidates a Dexter defender in action Saturday. Dexter defeated Chelsea, who

finished sixth in the SEC tournament, but the two will meet again Wednesday in district play.

Girls Preparing For 4-H Spring Achievement

Freer Acres 4-H Club is getting ready for this year's Spring Achievement.

Besides sewing last-minute buttons and button holes, the members are planning their annual Mothers' Tea, to be held March 8 at McKune Memorial Library, 3:30 p.m.

The tea gives the girls a chance to thank their mothers and leaders for all the help given over the past year.

There will also be a fashion show to give the girls some practice in modeling. Sandy Young is in charge of the tea.

FFA Teams Win Regional Gold Medals

Chelsea's FFA chapter traveled to regional competition last Thursday, Feb. 21, returning home with gold medal finishes for the parliamentary procedures team and the demonstration duo.

Kent Bollinger, Mark Lesser, Shawn Ball, Patti Shoemaker, Ken Morgan and Kelly O'Neill were the team members who took the parliamentary procedures gold award and qualified to go to state competition at Michigan State University March 19-21.

The demonstration team of Mark Machesky and Brian Koepele also took a gold in demonstration, and Amy Unterbrink took a second-place silver in job interview.

This Thursday, the chapter is planning a roller skating trip to Lakeview in Brighton from 8:30 to 10:30 p.m.

Michigan State University has established a network among clinical physicians in hospitals in southern lower Michigan to share information on human cancer.

POWERFUL IN-TRUCK . . .
Machinery for Amazing Results!!!

IN-SHOP . . .
Rug Cleaning, Auto Cleaning,
Upholstery Cleaning,
Rug Binding!!!
WATER DAMAGE SPECIALISTS!!!

BEST WAY
CARPET CLEANING

Mon.-Fri. 12 noon-6 p.m.
Sat. 9 a.m.-2 p.m.

Serving the Dexter-Chelsea area.
293 E. Huron 662-2723

VILLAGE ELECTION

To the Qualified Electors:
NOTICE IS HEREBY GIVEN, That an Annual Village Election will be held in the

VILLAGE OF CHELSEA

State of Michigan
— at —
SYLVAN TOWNSHIP HALL
112 W. Middle St.
Within said Village on

Monday, March 10, 1980

FOR THE PURPOSE OF VOTING FOR THE ELECTION OF THE FOLLOWING OFFICERS, VIZ:

- One Village President
- One Village Treasurer
- One Village Assessor
- Three Trustees — Full Term
- 2 Library Board Trustees for 3 years

Notice Relative to Opening & Closing of Polls
ELECTION LAW, ACT 116, P. A. 1964
SECTION 720. On the day of any election, the polls shall be opened at 7 o'clock in the forenoon, and shall be continuously open until 8 o'clock in the afternoon and no longer. Every qualified elector present and in line at the polls at the hour prescribed for the closing thereof shall be allowed to vote.

The POLLS of said election will be open at 7 o'clock a.m. and will remain open until 8 o'clock p.m. of said day of election.

THOMAS NEUMEYER, Village Clerk

NOW INTEREST PAID MONTHLY ON Money Market Certificates

\$10,000 Minimum

You don't have to wait six months to receive the interest from a Money Market Certificate at Ann Arbor Trust. If you elect to take advantage of our monthly interest payment plan, we'll pay you that interest each month with a check, or automatically transfer it to your Ann Arbor Trust Checking Account or to your Savings Account where it will earn 5.25% interest compounded continuously (Effective Annual Yield 5.467%).

Current Rates:

Effective Feb. 28 - March 5

Interest Rate: **13.629%**

Effective Annual Yield*: **14.339%**

Interest Earned In 26 Weeks On \$10,000: **\$ 689.02**

* Effective Annual Yield is based on reinvestment of the principal and interest after 26 weeks, at the same rate. The effective annual yield is calculated on 366 days and only applies to funds on deposit before March 1, 1980.

- Federal regulations prohibit compounding of interest on Money Market Certificates and require a substantial penalty for early withdrawal.
- Your savings are insured up to \$40,000 by FDIC.

CHELSEA BANKING OFFICE
ANN ARBOR TRUST COMPANY
1478 Chelsea-Manchester Road • Chelsea, Michigan 48118 • Phone 475-9154
MEMBER FDIC

Ann Arbor Trust . . . the leader in innovative banking services.



KNIGHTS OF COLUMBUS AUXILIARY, a relatively new Chelsea organization, showed support for the Symphony Band this week by presenting a check to the group for its Mexican Festival Trip Project. Taking the check from

President Emma Neibauer and auxiliary treasurer, Sister Pat Weigang, right, were, from left, band representatives Susan Prinzim, Jim Herter and Cindy Wolter.

Wrestlers Tie for 3rd Crime Spree . . .

(Continued from page one)
Ernie Bristle, wrestling at 98 lbs., took third; Jeff Osentoski, 112, finished second; Jim Cobb, 119, 2nd; Craig Surgeon, 132, 3rd; John Preston, 145, 1st; Rick Poljan, 167, 3rd; Bill Freeman, 185, 4th; and Will Rosentreter, heavyweight, 4th.

wrestlers qualified for the regionals. The state wrestling meet is this Friday and Saturday at Central Michigan University in Mt. Pleasant.

Under its office of International Studies and Programs, Michigan State University conducts 19 technical and educational assistance programs in Africa, Asia and Latin America.

(Continued from page one)
three drove to Monroe in the stolen vehicle.

In Monroe they smashed up the car in an accident, Detective Wade said, dumped the vehicle, and spent the night there somewhere out in the open.

The next morning they stole a truck and headed back to the Ypsilanti trailer park where they lived, only to find the area swarming with police, already alerted to the earlier crimes.

Quickly leaving the area, they headed for Dexter, Detective Wade said, where they allegedly broke into the Methodist church on Central St. and stole money and tape recorders.

Driving on Dancer Rd. between Chelsea and Dexter, they were run off the road and wrecked the stolen truck near the corner of Dancer and Beach. At that intersection, reports indicate, they broke into a home, left unoccupied by vacationing residents, and stole a shotgun.

A dead truck battery foiled plans to steal a vehicle at the house, and the trio set off down Beach to Lima Center, with the intention of procuring another car.

A car driven by Marilyn Line was stopped on Lima Center Rd. at gunpoint, Wade said, and the shotgun-wielding group ordered her out of the car. Thinking quickly, Line hit the accelerator and sped off, drawing fire from the two shotguns. Her car was hit, but she was not injured and escaped the area.

Wade said the three later admitted that they intended to shoot and kill the woman, leave her body on the road and take the car.

On foot, the trio traveled the railroad tracks between Chelsea and Dexter, ditching their weapons somewhere along the way. They arrived at Chelsea High school in the early evening, intent on stealing a car from the parking lot, but succeeded only in damaging the ignition.

They then entered the school and proceeded to rifle purses left unattended by students at an evening activity. Leaving the school, they walked down to Main

William Haworth Enlists in Air Force Delayed Program

William J. Haworth, son of Mr. and Mrs. Donald Haworth of 10681 Roepecke Rd., on Jan. 12 enlisted in the U. S. Air Force's Delayed Enlistment Program, according to Sgt. Edward J. Lehmann, Air Force recruiter.

Haworth, upon graduation from Chelsea High school, is scheduled for enlistment in the regular Air Force on June 17. Upon graduation from the Air Force's six-week basic training course at Lackland Air Force Base, Tex., he will receive 10 weeks of technical training as a Turbo Prop Reciprocating Engine Mechanic at Chanute Air Force Base, Ill.

He will be earning credits toward an Associates Degree through the Community College of the Air Force while attending basic and other Air Force technical training schools.

8th Grader Margie Rawson Touted as Future Champion

Competing for the first time last week-end as a Beach school swimmer, eighth grader Margie Rawson turned in some remarkable results.

At the Erie-Mason Invitational Saturday, Margie not only took three first-place finishes and broke three school records, but also brought home a trophy naming her the meet's outstanding swimmer.

She is the first female swimmer in the history of the meet (12 years) to be awarded that honor.

"Margie is a very dedicated young lady," Coach David Johnson said with admiration. "She works out 11 months of the year and becomes more determined each day."

Other accomplishments include school records in five events and numerous Chelsea Aquatic Club awards. Furthermore, she has qualified for the AAU Championships each year and performs well in each event she swims.

"Next year Margie will be a welcome addition to our girls high school squad," said Johnson. "She'll team up with the other girls and really help the team out, especially at the state meet."

Before that happens, however, Margie will compete in the Super-Six Championships and State AAU Championships in March, and then put in a summer of hard work. "After that," said Johnson, "we'll start thinking about qualifying for the state meet."

Margie is the daughter of Alice and Robert Rawson of Island Lake Rd.



TOP MEET SWIMMER: In the 12 years that the Erie-Mason Invitational has existed, no female swimmer has ever come away with best swimmer honors — until Chelsea's Margie Rawson came along, that is. Competing with the Beach school team, the talented, 8th grader plucked three first-place ribbons and set school records on her way to the top performer trophy.

Tell Them You Read It In The Standard!

CHOPPER 1 really works 3 to 4 times better than a conventional axe, splitting maul, or sledge hammer and wedges. — that's what our advertising claimed!

HERE ARE WHAT A FEW SATISFIED CHOPPER 1 USERS HAVE SAID:

"The CHOPPER 1 is certainly everything you advertised. It is the most ingenious and effective invention that I can recall and one of the very few which I would have liked to be able to say I had invented."
M. F. Council, Mass.

"I bought a CHOPPER 1 and found it to be even better than you described in your ads. What other wood working items do you manufacture?"
S. R. H. Hillsboro, Ohio

"We have been delighted to use our new CHOPPER 1 for the past few days. In my opinion it is a revolutionary tool. With this short experience, we are questioning that our wood splitting time is not by 1/2 to 2/3. Our new axe is a new found friend. Thanks!"
W. F. H. Twin Bridges, Montana

"Please send me CHOPPER 1 immediately. I have used 2 friends and it is amazing. It splits 12-16" Oak logs like toothpicks, and it even does quick work on Elm which I have found to be the most difficult wood to split. The people I have demonstrated it to just can't believe their eyes."
J. E. Manitoba, Canada

"Excellent Product! It really works!"
Dr. M. R. G. Kellonak, B.C. Canada

Chopper 1 — The Best Log Splitting Axe In The World

LEAP YEAR SPECIAL
25% Off
(Offer Good Until March 15, 1980)

ASCCO ALL-SEASON COMFORT CO.
Now Open 8 a.m. to 5 p.m. Mon. thru Sat.
Heating, Air Conditioning & Custom Sheet Metal Work
115 W. MIDDLE ST.
CHELSEA, MICH. 48118 (313) 475-7617

Laredo WESTERN BOOTS

Laredo boots are the result of over 50 years of bootmaking. Exciting styling, quality leathers as well as careful craftsmanship and comfortable fit make Laredos top values in western boots.

\$49⁹⁵ **\$51⁹⁵** **\$59⁹⁵**

FOSTER'S MEN'S WEAR

CEL CEDAR CREST ROOT COMPANY

Jiffy market
Big Enough To Serve You . . . Small Enough To Know You!
Corner of Sibley and Werkner Rds. - Chelsea, Michigan 48118
PHONE 475-1701 SALE PRICES EFFECTIVE FEB. 28, MARCH 2

Whole Chickens 49^c lb.	U.S.D.A. GRADE A CHICKEN PARTS BREASTS . . . lb. \$1.19 THIGHS . . . lb. 99c DRUMS . . . lb. 89c WINGS . . . lb. 39c BACKS . . . lb. 15c	QUARTERED PORK LOINS 1/4 Pork Loin Sliced Into 9 to 11 Chops \$1.39 lb.	
FARMER PEET RE-PEETER			
SLICED BACON lb. \$1.29			
U.S.D.A. CHOICE RIB STEAK LARGE END \$1.98	SILVER FLOSS SAUER-KRAUT 2-Lb. Bag 39^c	SALAY'S VIENNAS FRANKS \$1.79 lb.	
HOME-MADE PORK SAUSAGE \$1.09 lb.			
FRESH GRADE A - MEDIUM EGGS doz. 69^c			
WAY BAKING CO. Country Style WHITE BREAD 1-Lb. Loaf 49^c	Imperial Margarine 1-Lb. Quarters 59^c	NABISCO OREO COOKIES 1-Lb. 3-Oz. Pkg. 99^c	
WIN SCHULER'S Bar-S-Chips Assorted Flavors 5-Oz. Box 69^c			
FARM-MAID HOMOGENIZED MILK gal. \$1.89			
FARM-MAID SPECIALS			
LOW-FAT MILK gal. \$1.59	ORANGE JUICE 1/2 gal. 99^c	CHIP DIP 1/2 pt. 39^c	YOGURT SHAKES Assorted Flavors 6-Oz. Ctn. 39^c
12-OZ. CANS PEPSI-COLA 8 pac \$1.98 Plus Deposit			
FRESH MEATS - GROCERIES - PRODUCE - BEER - WINE - LIQUOR Open 7 a.m. Morning to 10 p.m. Nights - 7 Days A Week			



TOP RATED: The Contemporaires vocal music group from Chelsea High school earned a top I rating at last week-end's Solo and Ensemble Festival at Livonia Churchill High school. Contributing to the excellent effort were ensemble members, rear, from left, Liz Pfeiffer, Chris Check, Mary Bort, Mary McCallum, Nancy Heller, Sally Vaught, Anne Lewis, Marcia Warren, Director Tamara Barbret; front, Monica vanderWaard, Tracy Cattell, Paula Haist, Kim Harvey, Beth Bush, Pris Drew and Lois Brown.

Beach Wrestlers Post 9-2 Season

Beach Middle school's wrestling team ended its season with nine consecutive dual meet wins, finishing the season with an overall record of 9-2.

Eighth graders on this year's team were Ed Esch, Kurt Eisenbeiser, Scott Cooper, Jeff Morgan, Eric Stofflet, Tim Osen-

toski, Bob Murphy, Scott Hass, Ed Mullaly, Gar DeYoe, Jim Weber, David Tobias, John Laraway, Steve Rudd, Blake Alder, Jim Ritter, Rick Cook, David Gipson, Mark Porath and Pat Marentette.

Seventh graders this year were Mark Rosentreter, John Wilson,

Richie Mindokowski, Dan Fenton, Ricky Proctor, Chad Hodge, Will Van Reesema, Shane Brown, Brent Bauer, Todd Brown, Kevin Gross, Mark Bentley, Scott Mills and Pat Rowe.

"I hope that all of the eighth graders will develop into good high school wrestlers," Coach

Bill Wescott said. "They all have the ability to really help Chelsea wrestling in the future."

Winter term for 1980 at Michigan State University is the second highest, with 42,710 students enrolled. The largest was 43,038 in the winter of 1976.

Bulldog Cagers Show Class Against No. 1 Willow Run

(Continued from page one)
tunity to play in the final game because of a foot injury.

The Willow Run contest was not a conference game, however, and it should not be forgotten that the Bulldogs cinched a share of the SEC crown last Friday night, ending a 26-year title drought.

A share of the SEC crown officially fell to Chelsea's cagers as they defeated Lincoln, 69-59, in their final league match-up of the year.

There is still a possibility that the Bulldogs will find themselves all alone on top at season's end, but that will take a Milan defeat of Saline this Friday night. If Saline wins, the Bulldogs and Hornets become co-champions.

Lincoln made a fair bid to keep the Bulldogs from the title Friday night, playing fired-up basketball

and jumping out to a 15-12 lead after the first quarter.

Again, with a minute left in the first half, the Railsplitters were out in front, 30-29. An effective box zone defense, which defended man-to-man against Jeff Dils and played a two-and-two zone on the other players, kept Lincoln out in front.

In the last minute of the half, however, both Dils and John Dunn hit shots that put the Bulldogs on top by three and swung the momentum back to Chelsea.

"Going into the locker room, it meant that Lincoln played real good, but we were up by three," Coach Robin Raymond said.

On the box zone, Raymond noted that Lincoln played the pattern well, but "we are obviously not a one-man team. We put Jeff

on wing which took their one man out of the game. Effectively, we were playing four on four."

In the third quarter, Chelsea outscored the opposition 19-15, with John Dunn contributing eight points on four outside jump shots. Jon Riemenschneider hit seven points inside in that same quarter to account for the rest of Chelsea's scoring.

"It was the combination of inside and outside shooting that picked us up," said Raymond. "Dunn kept us in the game and then Riemenschneider picked up his points inside. It was a good combination. Riemenschneider came off the bench for his best game of the year, giving us needed inside strength."

Don Schrottenboer bucketed four points, Dunn had five and Dils made six freethrows to ice the game for the Bulldogs in the final quarter.

"Time forced them to press us," explained Raymond, "which ultimately means they have to commit fouls. They fouled Jeff and he made six out of eight."

A big difference in the game was free throw shooting. Chelsea made 21 of 26 for an outstanding 81 percent, while Lincoln was successful on only seven in 19 attempts, for accuracy of only 37 percent.

Lincoln outdid Chelsea in shooting from the floor, making 26 of 58 for 45 percent. The Bulldogs' 43 percent came on 24 shots in 46 attempts.

Don Schrottenboer had a season high 17 rebounds in leading Chelsea to dominate the boards, 39-30. Jon Riemenschneider had eight rebounds and Karl Albrecht had seven.

The excellent balance that has carried Chelsea all season showed in the final scoring. Dunn and Riemenschneider finished the game with 17 points each, Schrottenboer had 14 and Dils scored 13. Sean Peterson followed up with four points, and Brad Knickerbocker and Karl Albrecht each scored two.

Outstanding for Lincoln was Darryl McClain, who scored 25 points and kept the Railsplitters in the game with his outside shooting. "It was our balance against McClain's shooting," Raymond summed up.

"We have different people who play well when called on," he continued. "That's the reason for our success. Friday, it was like it was Riemenschneider's turn to score points since Mike Killelea was out for the week with a hurt foot."

Final regular season game for the Bulldogs will be played this Friday evening in Mason.

Score by quarters—Willow Run
Willow Run 15 19 18 17—69
Chelsea 9 15 15 21—60

Score by quarters—Lincoln
Chelsea 12 21 19 17—69
Lincoln 15 15 14 15—59

Telephone your club news to 475-1371

To the Lima Township Taxpayers

You will soon be receiving this year's tax assessment notices. On the average, farm assessments were increased 30% and residential assessments were increased 16%. I don't like it any better than you. The best I can do is to try to assure that the assessments are uniform and reflect no more than 50% of true cash value. No matter how hard I try, the County Commissioners, using the Equalization Department, prodded by the State Tax Commission, somehow come right back and state that the assessments I put on your property are too low. And as you can tell from your assessment increases, they are quite successful. But then any procedure which permits a state agency like the State Tax Commission to write the rules and then interpret those same rules guarantees success.

And why do these big increases in assessment keep occurring year after year. The answer is political, and it starts with the Governor.

The Governor has said time and time again that he has not increased your taxes. But he has! Through his power of appointment, he makes sure people who serve on the State Tax Commission will write and enforce rules that have the effect of forcing your local assessor to increase your assessment. The ultimate goal of these forced assessment increases is to release state monies formerly used to fund part of your local school program. The Governor then uses this "released" money to fund other expanded state programs. And he can, and does claim that he did not raise your taxes. But as you can see — he really did!

So what can you do? Individually — very little. If you can convince the Board of Review to reduce your assessment, chances are that, someone else will have to pick up your reduction. However, if we can form a cohesive citizens tax group and all try to achieve the same goals together, we have the potential for making a real difference. But you must be willing to try some new innovative ideas and methods because, as you are well aware, the old ideas and methods are not working. I am quite sure that new ideas, with strong citizen support, will work to the advantage of all. I think the very real successes achieved by the Mill Creek Research Council this year provide ample evidence that well organized citizens groups can be extremely effective.

Leila C. Bauer
Lima Township Supervisor

ATTENTION FORD EMPLOYEES.

Report to your nearest Washtenaw County Ford Dealer Friday, Feb. 29, between 5 p.m. and 10 p.m. or Saturday, March 1, between 10 a.m. and 5 p.m. Take advantage of an incredible savings opportunity.

SPECIAL FORD EMPLOYEE SALES EVENT.

FRIDAY, FEB. 29, 5 p.m. to 10 p.m. · SATURDAY, MARCH 1, 10 a.m. to 5 p.m.

The Washtenaw County Dealers are setting aside a special time for Ford employes, Ford retirees and their families only to attend a Special Ford Employee Sales Event featuring great values on 1980 and 1979 Ford cars and trucks.

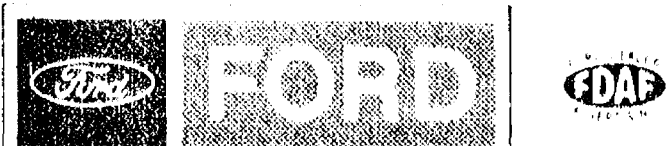
- \$500 money back when you buy any new 1980 or 1979 Thunderbird. Receive a check direct from Ford.
- \$300 money back when you buy any new 1980 or 1979 Fairmont. Receive a check direct from Ford.

\$300 money back when you buy any new 1979 Ford F-100 through F-350 Pickup, Van, Bronco or Club Wagon. Receive a check direct from the Ford Dealer Advertising Association.

- All prices and discounts will be clearly marked on the windshield of every car and truck displayed. You won't have to haggle for an outstanding deal.
- You can buy from stock or order now through March 1, the 1980 Ford you want built to your exact specifications. You must take delivery on any model bought from stock between Feb. 11 and March 22 when the offer expires.
- Arrangements have been made for quick credit approval for qualified buyers and for on-the-spot trade-in appraisals.
- These rebates may be applied to your down payment.
- Bring your Ford employe identification, the title to your present car and your valid driver's license.
- This may be your last chance to order a 1980 Ford and get these savings.

DON'T MISS THIS OPPORTUNITY.

THIS SPECIAL FORD EMPLOYEE SALES EVENT IS FOR FRIDAY NIGHT AND SATURDAY ONLY.



PALMER MOTOR SALES, INC.
224 S. MAIN ST. CHELSEA, MICH.

Spikers of the Week



CRISTI THOMSEN and Cindy Gerstler are the final two starting volleyballers to be featured this season. Coach Judy Bottum pointed to Thomsen as one player who saves a lot of low

shots that would go by anyone but her. Cindy Gerstler, Bottum said, is the most consistent spiker on the squad, and, of the spikers, plays best defense.

SEC ROUNDUP:

No. 1 Willow Run Gives Dexter Basketball Lesson

Saline was idle this week as Chelsea defeated Lincoln to grab a share of the SEC title Friday night. Saline must defeat Milan this Friday to claim a dual league crown.

Milan was in excellent form last Friday, downing Jackson County Western, 81-55, while Saline will be coming to the contest after a week and a half of inactivity.

Dexter met with number one Class B power Willow Run and

played the Flyer second string to a 97-55 loss.

Regular season play ends for SEC teams this Friday night, and each team will move into tournament play in its respective district next week.

Milan 81, JC Western 55—

Milan prepared for this week's meeting with arch-rival Saline by dismantling Jackson County Western, 81-55, in SEC play.

John Gruden had 21 points and

12 rebounds as the Big Reds upped their record to 14-5 over-all and 6-3 in the league.

Rob Cranson added 12 points and hauled down 13 rebounds in the rout.

Willow Run 97, Dexter 55—

Relying on their second string for the final three periods, Willow Run's Flyers gave Dexter a basketball lesson Friday night, 97-55.

Willow Run posted a 33-10 lead after the first quarter and never looked back.

Johnnie Bailey and Bernardi Williams each scored 18 points and Keith Jackson had 15, handing the Flyers their 16th win against one loss.

Dreadnaughts were led by Jim Vaughan who scored 15 and Rob Ianni with 14.

SEC STANDINGS

	SEC		Overall	
	W	L	W	L
Chelsea	9	1	15	3
Saline	8	1	13	2
Milan	6	3	14	5
Dexter	2	7	5	11
Lincoln	2	8	4	11
JC West.	3	6	4	11

Letters to the Editor

To the Editor:

Regardless of the opinion of certain community officials, I, Stephanie Kanten, am lawfully and legally a nominee for the office of trustee of the Village Council of Chelsea. The political ideals of our Independent Party, which elected me to this nomination, allows for more than one point of view. Perhaps those who have labeled me a "dissident" are too narrow in perspective to include differing opinions.

As a nominee, I would like to raise some pertinent questions to the scrutiny of the citizens of Chelsea. Among these are some questions regarding the proposed changes in our sewer system:

1. Who is proposing a new water tower to be located south of town, behind Elias Brothers, and what are the reasons for its need?

2. Who is proposing and for what purpose, the extension of the new, west trunk sewer line beyond the village limits to the south? (This area covers behind Elias Brothers and Schumm's.)

3. What is the final word on the homeowners financial responsibility, on repair and replacement of individual sewer lines? It appears that the village is going to turn over this responsibility, with the respect to the sewer lines, from the sidewalk out to the main sewer line. It has always been the village's responsibility to lay tile from the main sewer line to the property line. Has this policy changed?

Perhaps the answers to these questions were available to those in attendance, at a particular council meeting. If so, why was this information not published? Perhaps this is one of the main thrusts of my candidacy—to involve more of the citizens of Chelsea, in the discussion and decisions regarding Chelsea's future.

Stephanie (Sis) Kanten.

ballot. Since then, the only active party has been the Independent Party. The Village has prospered under this system with a government that has been efficient and responsive to the needs of the community as a whole and not swayed by individual demands. Now comes a small group, who incorrectly feel aggrieved by actions of the Village, that would have you think it is time for a sweeping change in Chelsea government. Motivated by these individual concerns and dislikes for certain individuals in the administration, they have decided to "show them." Instead of starting their own political party, they chose to invade the caucus of the Independent Party where members of their own group were nominated over the incumbents.

I hope you are as concerned about the future of Chelsea as I am and will support the incumbents with a write-in vote for president, Wood; trustees, Brown and Schardein and Phil Hume as my replacement.

Harold Rady,
Village Trustee

To the Editor:

On Feb. 6, the Intertroop chairman of the Chelsea Brownies and Girl Scouts arranged a Roller Skating party at World of Wheels in Ann Arbor. Each Wednesday is Scout Night at the rink. All scouts and their guests can get into the WOW for 1/2 the regular admission price. After calling several times to ask about rules and regulations, I was told brothers and sisters of any scouts were welcome.

When the scouts and their leaders arrived at the rink, two of the leaders and their toddlers were not allowed admittance unless each of the toddlers had skates on, even though they would not be skating. The leaders tried to talk to the manager-owner about the problem. He was rude and argumentative and pointed to a sign on the wall that said "no observers with the exception of parents or guardians." When one of the leaders involved mentioned the fact that he had let her come in last May with her child, he implied that she had sneaked in before and he "caught her" this time. He would not let the leaders in to speak to other leaders of the scouts that they were responsible for. He locked them out.

When one of the other leaders found out what had happened and tried to speak to the manager/owner, he again pointed to the sign about observers and then added that that was the reason he let scouts in: to learn the rules. The leader mentioned the fact that we had come from Chelsea and since this was our first visit, there was no way that we would have known about the rule. (This rule was not mentioned during the numerous calls we made before our visit.)

He then said that he didn't need the Scouts and that he was doing them a favor by giving them a discount, and letting them in at all! After more verbal abuse, he reduced the leader to tears.

After that I wanted to speak to the "gentleman" and went to the ticket window. I was told in no uncertain terms that this man had five other rinks, all of which were successful. With that, the cashier closed the window in my face.

I was not particularly happy with the rule but did not dispute the fact that he had a right to make any rule that he wanted. It was the way in which the situation was handled, that I objected to. He was rude and had a chip on his shoulder before we had a chance to speak to him. Obviously, when he stated that he didn't need the Scouts, he also doesn't need the business that satisfied customers would bring back on the week-end when they would be full paying customers.

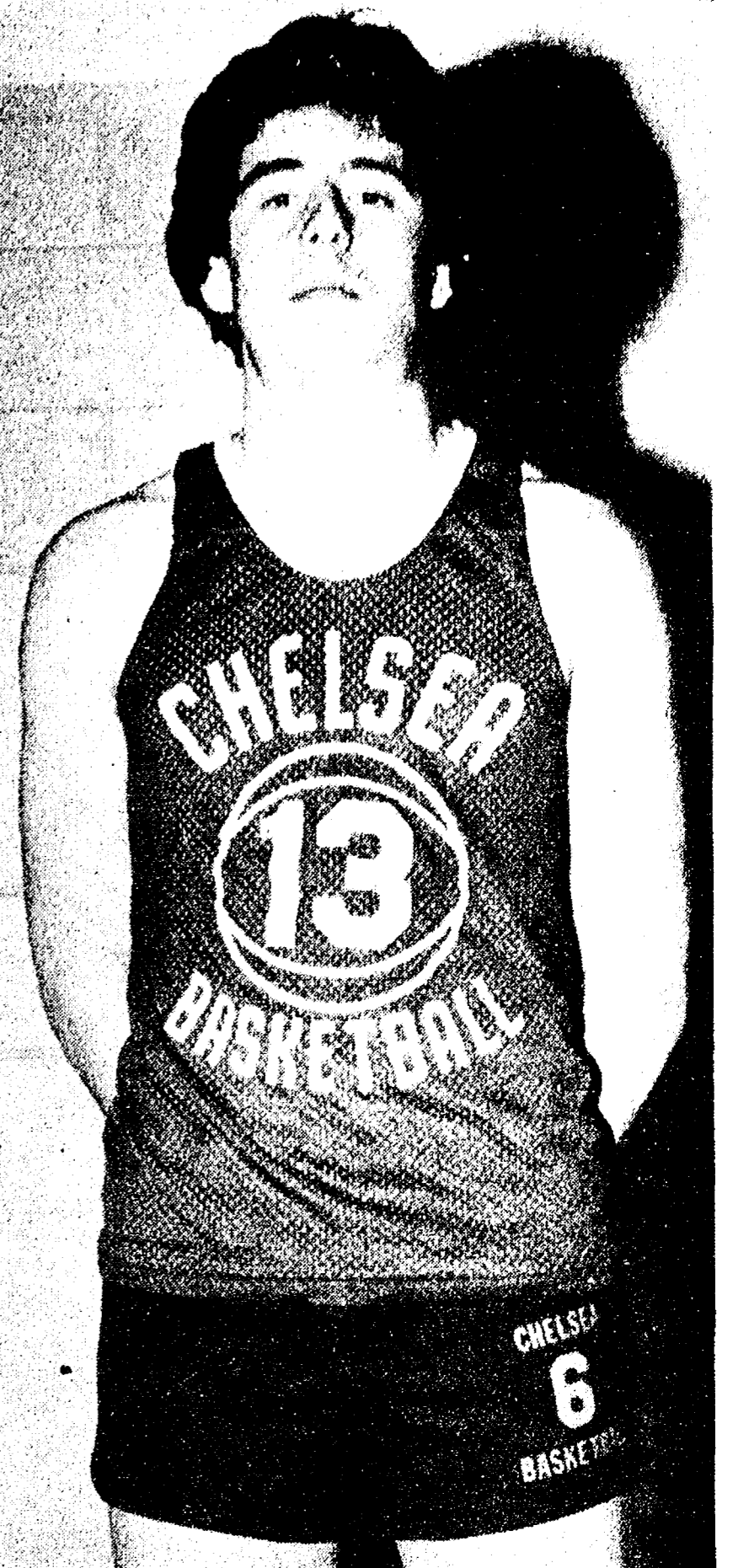
Huron Valley Council of the Girl Scouts obviously are not considered valuable customers. For that reason I felt that other Scouts might want to be aware of the attitude of the manager-owner and some of his employees before they want to make arrangements for area-wide activities.

Mrs. Gari Feldman
Troop Service Director,
South Cluster, Chelsea

Please Notify Us of
Any Change in Address

MASONRY
FIREPLACES
BRICK and BLOCK
LAYING
FREE ESTIMATES
DENNIS GAREN
Ph. (313) 475-2584

Cager of the Week

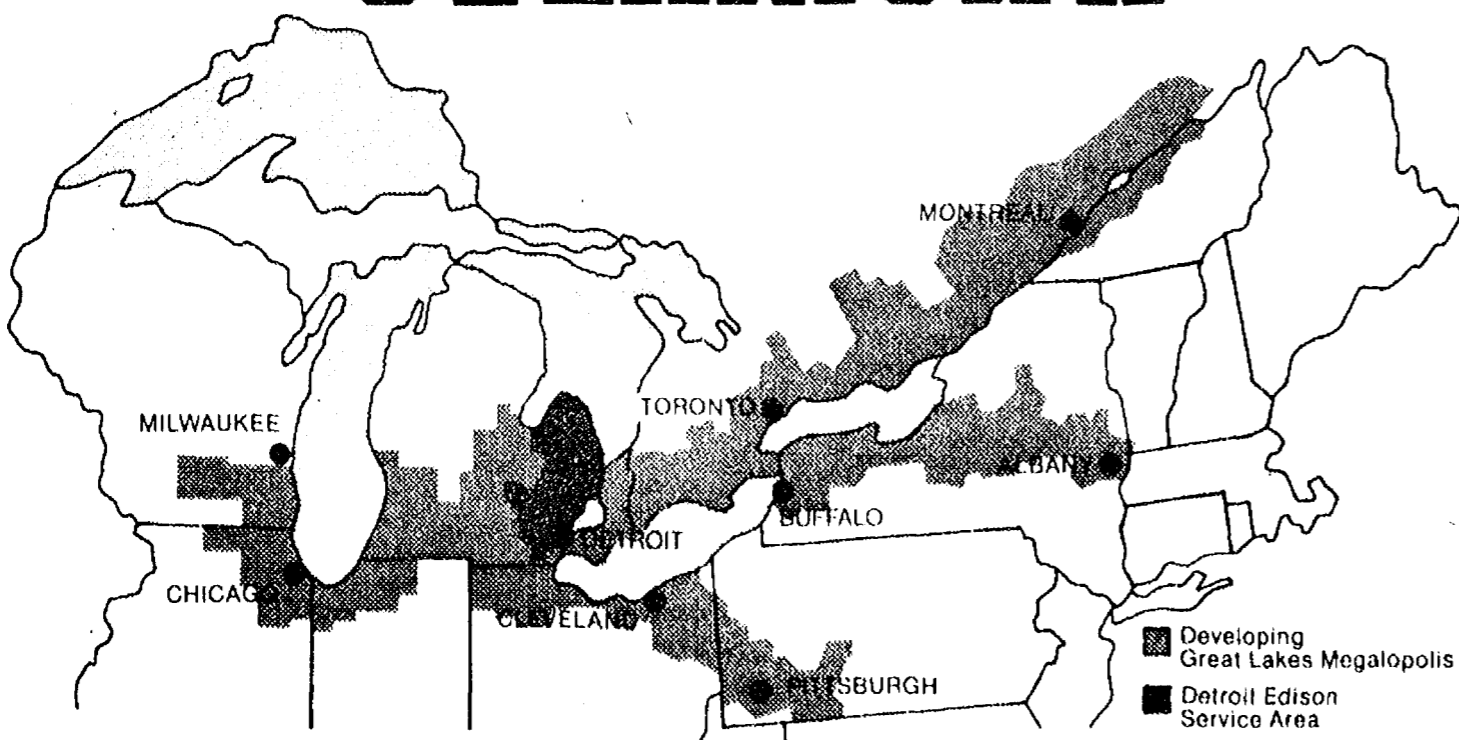


DAN MCGILL, "Mr. Cool" to his fellow varsity players, is in the spotlight this week as the featured cager. Playing his first year on varsity, the 5'11", 155-lb. senior guard has improved much over the season, according to Coach Robin Raymond. Raymond said that McGill has given the Bulldogs good support from the bench, and, with a junior year of experience, might have seen more action.

KITCHEN REMODELING
★ We at Dutch Country are kitchen remodeling specialists.
★ Expert installation available.
★ Free design layout service.
★ Featuring: HAND CRAFTED AMISH CABINETS.
★ Distinctive "GOLDEN OAK CABINETS" By Continental.
★ Jenn-Air Appliances ★ Delta Faucets ★ Elkay & Kohler Sinks.
VISIT OUR SHOWROOM
DUTCH COUNTRY KITCHENS
146 E. Main 428-7292 Manchester

ENERGY PLUS⁺

+ A MARKET OF 75 MILLION PEOPLE YOU CAN REACH OVERNIGHT.



Southeastern Michigan. The heart of one of the world's largest industrial areas—an urbanized region that stretches along the Great Lakes from Chicago and Milwaukee on the west to Montreal, Pittsburgh and Albany on the east.

It's a huge market quickly reached by overnight trucking that rolls out from Michigan's toll-free expressways. Six rail networks and three air cargo ports put the rest of the country in easy touch. And the Port of Detroit

provides major commercial docking facilities along 32 miles of deep-water frontage on an international waterway.

It adds up to an enormous advantage in selling the products made here. So does the fact that there's plenty of electric power. Because Detroit Edison generates more than 80% of its electricity from coal—our nation's most abundant fuel.

Thinking of expanding or relocating your business? Detroit Edison can

provide energy plus assistance to help you make the right decision. Write: Area Development, Detroit Edison, 308 WCB, 2000 Second Ave., Detroit, MI 48226.

Keeping the power in your hands

Detroit Edison

OUR PECOS BOOT IS
BUILT TOUGH!

- ① Full-grain, oil-tanned leather
- ② Goodyear Welt construction
- ③ Insole shapes to your foot like a footprint
- ④ Tempered steel shank
- ⑤ Composition sole resists tears and abrasion, exceptional resistance to oil absorption
- ⑥ Western walking heel

*SIZES 5-15
WIDTHS A-EEE
*Not all sizes in all widths.

Safety Steel Toe Available
RED WING
VOGEL'S & FOSTER'S
Phone 475-1606 Chelsea, Mich.

LIMA TOWNSHIP BOARD OF REVIEW

NOTICE IS HEREBY GIVEN to all persons liable to assessment for taxes in

LIMA TOWNSHIP

11452 Jackson Road, Chelsea, Michigan

that the Board of Review will meet at the LIMA TOWNSHIP HALL

to hear appeals to the Assessment Roll on

MONDAY, MARCH 10, 1980

9 a.m. to 12 Noon and 1 p.m. to 4 p.m.

TUESDAY, MARCH 11, 1980


9 a.m. to 12 noon; 1 p.m. to 3 p.m. & 6 p.m. to 8 p.m.

at which time, upon request of any person, or his or her agent, who is assessed on this tax roll and if sufficient cause is shown, this Board of Review will correct the assessment on the property in question in a manner that will, in their judgment, make the valuation relatively just and equal. The assessment tax roll, after being reviewed and approved by the Board of Review, will be the assessment roll of LIMA TOWNSHIP for the year 1980.

The County Board of Commissioners of Washtenaw County has proposed the following ratios for the year 1980: Agriculture, 38.20; Commercial and Industrial, 43.11; Residential, 42.75; Developmental, 40.97; Overall, 41.09.

LEILA C. BAUER, Supervisor

Dated: Feb. 12, 1980.



**Hoffman
Tire & Service**
7 miles west of Chelsea
13660 E. Michigan
Grass Lake 522-8542

CERTIFIED IN TUNE UPS & ENGINE REPAIR

Tell Them You Read It
in The Standard!

**LITTLE ROOSTER
RESTAURANT & LOUNGE**
PHONE 426-8668
11485 North Territorial Rd. (Corner Dexter Townhall Rd.)

DINING and COCKTAILS
LIVE ENTERTAINMENT & DANCING
FRIDAY & SATURDAY, 9-2

HOURS: Tues., Wed., Thurs. 4 p.m. to 11:30 p.m.
Friday 4 p.m. to 2 a.m.
Saturday 2 p.m. to 2 a.m.
Sunday 2 p.m. to 10 p.m.
Monday Closed

**American Legion Post 31's
ST. PATRICK'S DAY
DANCE
MARCH 15, 1980**
9:00 p.m. to 1:00 a.m.
GOLD RUSH BAND
\$15.00 per couple
BYOB - DOOR PRIZES - BUFFET

Tickets available at Chelsea Lumber Co., Strieter's, or 475-7491

CALL OR STOP IN
CHELSEA GLASS, INC.
WORKMANSHIP AND MATERIALS FULLY GUARANTEED
Open Daily 8 a.m. to 5 p.m.; Sat., 8 a.m. to 1 p.m.
140 W. Middle, Chelsea Phone (313) 475-8667

WE REPAIR AND REPLACE:

- ★ STORE FRONTS
- ★ FURNITURE TOPS
- ★ SHOWER DOORS
- ★ THERMOPANES
- ★ AUTO GLASS - Including Windshields
- ★ MIRRORS
- ★ PATIO DOORS
- ★ TUB ENCLOSURES

Free Pick-up and delivery on auto work.

Storm Door & Window Reglazing & Screens
COMMERCIAL BUILDINGS OR RESIDENTIAL
PROMPT SERVICE REASONABLE PRICES

OPEN SUNDAYS
10 a.m. to 2 p.m.
MAIN STORE ONLY
1414 S. MAIN ST., CHELSEA
Phone 475-9106

The PARTS PEDDLER
AUTO SUPPLY STORES



A & W OF CHELSEA
DINNERS HOME-MADE SOUPS and PIES

Something New MEXICAN TACOS

Quick Carry-Out Service and Comfortable Inside Seating

A & W CHELSEA
M-52 and I-94
PHONE 475-2055

OPEN DAILY 8 a.m. to 8 p.m.
SAVE TIME - CALL AHEAD FOR CARRY-OUT ORDERS




SMOKY BLAZE: A Chelsea firefighter watches smoke billow from a home at 13910 Lakeview Rd., Half Moon Lake. Four Chelsea trucks were called to the scene Tuesday afternoon to fight the blaze that gutted the interior of the log cabin. Firemen report that the interior was gutted and that a cause has not yet been determined. An unnamed occupant, renting the cabin from Greg Staly, was not home when the blaze began.

JV Cagers Lose to NW, Down Lincoln

Rebounding proved the downfall of the Chelsea junior varsity cagers last Tuesday, but it was their crowning glory Friday night. The JV fell to Jackson Northwest last Tuesday, 45-43, but used the boards expertly Friday to gain a 62-44 win over Ypsilanti Lincoln.

Coach Jon Schaffner called the Lincoln game "our best game of the year. We just did everything really nice."

Before the Chelsea victory, the Railsplitters boasted a 14-4 record.

John Welton had a superb game for the Bulldogs, scoring 23 points and grabbing four rebounds. He made an exceptional nine of 12 from the field and was 7-9 at the free throw line.

Mike Bareis and Todd Sprague were next with 11 points each and seven and 10 rebounds, respectively. Toby Boyd had five points, Daren Pierson and Bob Trevino each bucketed four points, and Doug Inglis had two.

Darrow Keezer, in foul trouble early, played less than a quarter of the contest.

Chelsea dominated the boards on the larger Railsplitters, grabbing 35 to the opposition's 21.

Against Jackson Northwest, however, rebounding played a

quite different role for the Bulldogs.

"We did a bad job on the rebounds," explained Coach Jon Schaffner. "I don't know what happened, but we just didn't rebound."

Northwest controlled the boards to the tune of 32-23 and blasted Chelsea 15-8 in the final period to take a two-point win, 45-43.

John Welton led the Bulldogs with 12 points. Keezer had 10 and nine rebounds, and Jeff Lantis, Todd Sprague and Jeff Shaw had four each. Bob Bareis, Dave Stevens and Doug Henson bucketed two each.

Welton also made eight assists and executed four steals. Pierson and Trevino had three steals apiece and Sprague made three assists.

With all league play completed, Chelsea finishes the SEC season with a 4-6 record. Over-all, the JV is 6-12 with two contests left to play.

Score by quarters—Northwest
Chelsea 9 10 16 8—43
Northwest 9 7 14 15—45

Score by quarters—Lincoln
Chelsea 12 14 16 20—62
Lincoln 7 14 12 11—44

Youths Compete In Detroit Area Debate Contest

David Skjaerlund of Dexter and Drew Sprague of Chelsea represented Washtenaw county at this year's John S. Knight Scholastic Debate Contest held at Detroit's Renaissance Center Friday and Saturday, Feb. 22-23.

They were among 40 contestants from around Michigan at this 54th annual event sponsored by the Detroit Free Press under the auspices of the Interscholastic Forensics Association, designed to promote debate programs throughout the state.

David, a senior on the debate team at Ann Arbor's Greenhills school, qualified for the state finals on the basis of his performance during his team's first-place effort at the regional competition at Central Michigan University.

The March of Dimes emphasizes the benefits of prenatal care. Statistics show that low birthweight, a birth defect, and infant death rates are much higher for mothers who have no prenatal care.

Consumer Satisfaction With Funeral Services Reported at New High

Consumer satisfaction with funeral service reached an all-time high in 1979, according to survey results released recently by Donald Cole of Burghardt-Cole Chelsea Funeral Chapel.

As a member of the International Order of the Golden Rule, Burghardt-Cole Chelsea Funeral Chapel received the statistics showing that 97.7 percent of families responding to OGR's survey expressed satisfaction with the funeral service they received. The figure for 1978 was 97.3 percent.

"I think these statistics show that funeral directors are doing a superb job of serving consumers," said Dale L. Rollings, executive director of OGR. "They also reflect the benefit of the increased interest in funeral service on the part of the public. More people are visiting funeral homes these days to learn about funeral service before death occurs, so they are better prepared when the need arises."

"Pre-arranged funerals are also increasing and can help contribute to consumer satisfaction," Rollings continued.

"Families discuss the funeral among themselves, then visit their funeral director and record their wishes in writing. The form is held at the funeral home to be used as a guide by survivors responsible for making arrangements. Many times, they go a step farther and deposit funds in a pre-payment plan to be applied to funeral expenses."

Rollings explained that the 97.7 percent satisfaction figure came from a nationwide survey of families.

"Members provide us with lists of families served. We contact each family from our association headquarters to assess the quality of the service provided. In 1979, we received 44,588 replies, of which 43,587 were totally favorable.

"Replies with questions or criticism are reported to the member involved so that he or she can determine whether further contact with the family can resolve the situation."

Michigan State University, founded in 1855, marks its 125th anniversary in 1980.

THE BRUTE
(26-INCH LOG)

SPECIFICATIONS:

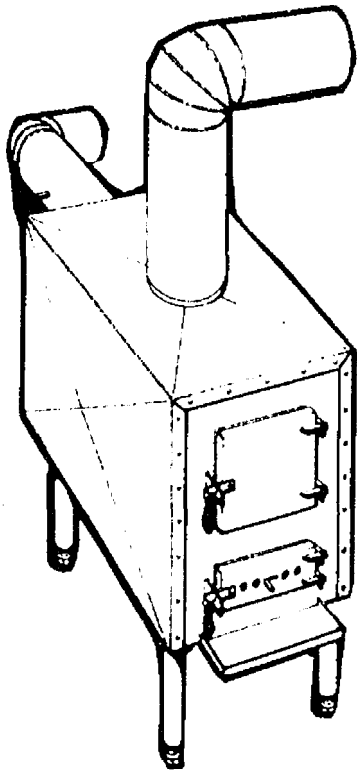
- Heats buildings up to 2,400 sq. ft. Approximately 125,000 145,000 B.T.U. 465 CFM Blower - thermostatically controlled.
- 10" Hot Air Pipe
- 6" Smoke Pipe
- 9" Legs
- 325 CFM Blower (optional)
- Hot Water Coils (optional)

Other Models Available
1,400 - 2,900 sq. ft.

HURON VALLEY GARDEN CENTER
5024 JACKSON RD. (Old Green Barn) PH. 662-6714

SAVES MONEY GAS AND OIL

- Fire Pots Double Welded
- Removable Ash Pan
- Spark Catcher
- Manual Adjustable Draft
- Finish: Black Heat-resistant Paint
- Heat Restrictor
- Long-Lasting Fires



CHELSEA SYMPHONY BAND

MEXICAN FESTIVAL

BAND TRIP BENEFIT

SUNDAY, MARCH 9
2 p.m. to 8 p.m.

WOLVERINE LOUNGE
OLD US-12, CHELSEA

Music provided by:
SALINE BIG BAND
COMMUNITY JAZZ BAND

★
All proceeds go to
CHELSEA SYMPHONY BAND MEXICAN FESTIVAL PROJECT



The Bureau of Labor Statistics (BLS), originally created by Congress in 1884 and made part of the then-new U. S. Department of Labor in 1913, acts as the nation's chief economic factfinder in many areas, including data on the labor force, employment, occupational outlook, wages and hours, industrial relations, prices, productivity and occupational safety and health.

Bank Cagers Demolish Garnett's in Rec. Play

Chelsea State Bank's cagers were the standouts in Chelsea Recreation Department men's basketball action this week, thoroughly demolishing Garnett's, 137-35.

Mike Lauremein was the star

for Chelsea State Bank, scoring 30 points.

Rocking M Ranch kept its perfect record intact with a slim victory over Dana, 59-58. Steve Wallace scored 20 for Rocking M, and Dave Hinkel had 19 for Dana.

Ann Arbor Centerless recorded its fourth win in the league with a 59-54 victory over Banner, Spring, and 4-Slide. Tom Weber scored 19 for the losers, and Mike Tobin bucketed 15 for Centerless.

In the final game of the week, Union Savings Bank recorded a comfortable victory over JMC, 71-45. Jeff Clark led the winners.

Scores by Quarters—
Chelsea Bank 22 29 40 46—137
Garnett's 11 5 11 8—35

R M Ranch 13 14 14 18—59
Dana 8 18 19 15—58

Banner 18 8 12 16—54
Ctrless 6 20 14 19—59

Union Bank 16 16 19 20—71
JMC 11 12 10 12—45

League Standings

	W	L
Rocking M Ranch	4	0
Chelsea Bank	4	0
Centerless	4	1
Dana	3	2
Union Bank	3	2
JMC	1	3
Banner, etc.	1	3
Thompson's Pizza	0	4
Garnett's	0	5



WITH POWERFUL STROKES, Chelsea swimmer Paul Schumann helped Chelsea finish second behind Monroe in last Saturday's Chelsea Invitational. Schumann is part of the free style relay team that Chelsea will send to the upcoming State Meet.

The Veterans Administration is celebrating its 50th year as an independent federal agency established solely to serve armed forces veterans and their families. Prior to 1930, responsibility for veterans programs was shared by several federal agencies.

CATS CHELSEA AREA TRANSPORTATION SYSTEM

Transportation for the Senior Citizens, 65 years & Older, & the Handicapped.

Advance reservations are required. For morning transportation call the preceding afternoon between 1 p.m. and 3 p.m. For afternoon transportation call in the morning from 9 a.m. to 11 a.m.

CALL 475-9494

between 9 to 11 a.m. or 1 to 3 p.m.

Service hours are 9 a.m. to 4:30 p.m. daily;
Thursdays, 9 a.m. to 1 p.m.

"My old tax service didn't double-check everything. I shoulda come here last year."



We make sure we thoroughly understand your tax situation before we prepare your return. And then we double-check every return for accuracy.

H&R BLOCK
THE INCOME TAX PEOPLE

105 S. MAIN ST., CHELSEA
PH. 475-2752

Appointments available, 9 to 6, Mon. thru Sat.

Now you can replace favorite lampshades that have become dirty or tattered.



We've got beautiful lampshades at Top of the Lamp. You may want to brighten your livingroom, den or bedroom with these distinctive shades. Lampshades add that subtle touch that gives character to a room. You can be elegant, colorful or fun. Nothing else so simple can affect a room so much.

Our shades are made from the finest linen or silk. They are washable and they'll last for decades.

TOP OF THE LAMP

The only lampshade store in Washtenaw County
217 North Main Street • Ann Arbor, Michigan



CAROUSEL PLAYERS: With just two weeks to opening night, these energetic cast members really sell a song from the Rodgers and Hammerstein musical, "Carousel."

Polishing their performances here are, from left, Eric Kruger, Dave Morris, Mike Ward, Phil Powers, Pat Powers, Rob Benedict, Dan Alber and Jeff Halst.

'Carousel'
Tickets Now
On Sale

Performances of the Chelsea High school musical production "Carousel" are right around the corner, and ticket sales are now underway.

Beginning Friday, Feb. 29, the public may purchase tickets for the March 13, 14 and 15 evening performances at Chelsea Pharmacy. Tickets are sold on a reserved seat basis and at the door for \$3.

This year, tickets are also available at group rates for the Thursday night, March 13, performance. For more information on group rates, call 475-9131 and ask for Tammie Barbret.

**Gregory Area Youth
Completes Naval
Recruit Training**

Navy Airman Apprentice Neal F. Wiesner, son of Robert A. and Shirley A. Wiesner of 14112 North Territorial, Gergory, has completed recruit training at the Naval Training Center, Great Lakes, Ill.

During the eight-week training cycle, he studied general military subjects designed to prepare him for further academic and on-the-job training in one of the Navy's 85 basic occupational fields.

Included in his studies were seamanship, close-order drill, Naval history and first aid. Personnel who complete this course of instruction are eligible for three hours of college credit in Physical Education and Hygiene.

A 1979 graduate of Chelsea High school, he joined the Navy in September 1979.

The U. S. Labor Department has allocated \$168 million in Comprehensive Employment and Training Act (CETA) funds to Indian and Native American groups to provide jobs and training during the 1980 fiscal year. The 181 tribes and other groups receiving the funds are expected to serve nearly 80,000 persons, both on reservations and in areas with large Indian and Native American populations.

**Residential - Commercial
REMODELING**

FREE ESTIMATES

**Ib. V. JENSEN
and SON**

LICENSED BUILDER
378 Spring Lake Drive
Chelsea, Mich.
PHONE 475-1820

**FOR
PROFIT**

See us for feed needs!

Feed Formulas Tested, Proved To Get Results

Extra proteins, vitamins and minerals in proper balance, scientifically blended, make our feeds real profit producers for you.

Farmers' Supply Co.
Phone 475-5511

You Read It First in The Standard!

The Chelsea Woodshed Presents:
All You Can Eat Specials

Monday - Steamed Alaskan Crab Legs
Served with green salad & shed fries

\$9.25
per person

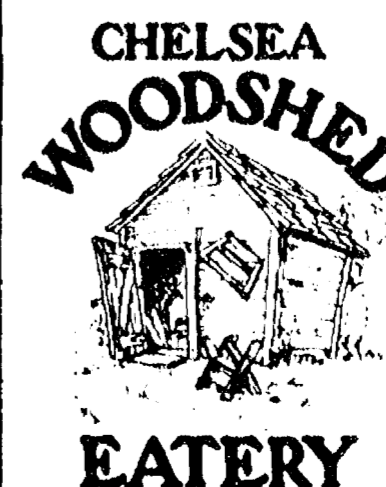
Tuesday - Deep Fried Battered Chicken
Served with green salad & shed fries

\$5.50
per person

Wednesday - Ocean Fresh Battered Fish
Served with green salad & shed fries

\$5.75
per person

Specials Available 5 p.m. to 10 p.m.



113 S. Main
Chelsea, Michigan
(Just 15 minutes from Ann Arbor)
Call 475-1922

Monday - Thursday 7-10
Friday and Saturday 7-11
Closed Sundays



McCALLA FEEDS

12875 OLD US-12

PHONE 313-475-8153

CHELSEA, MICH.

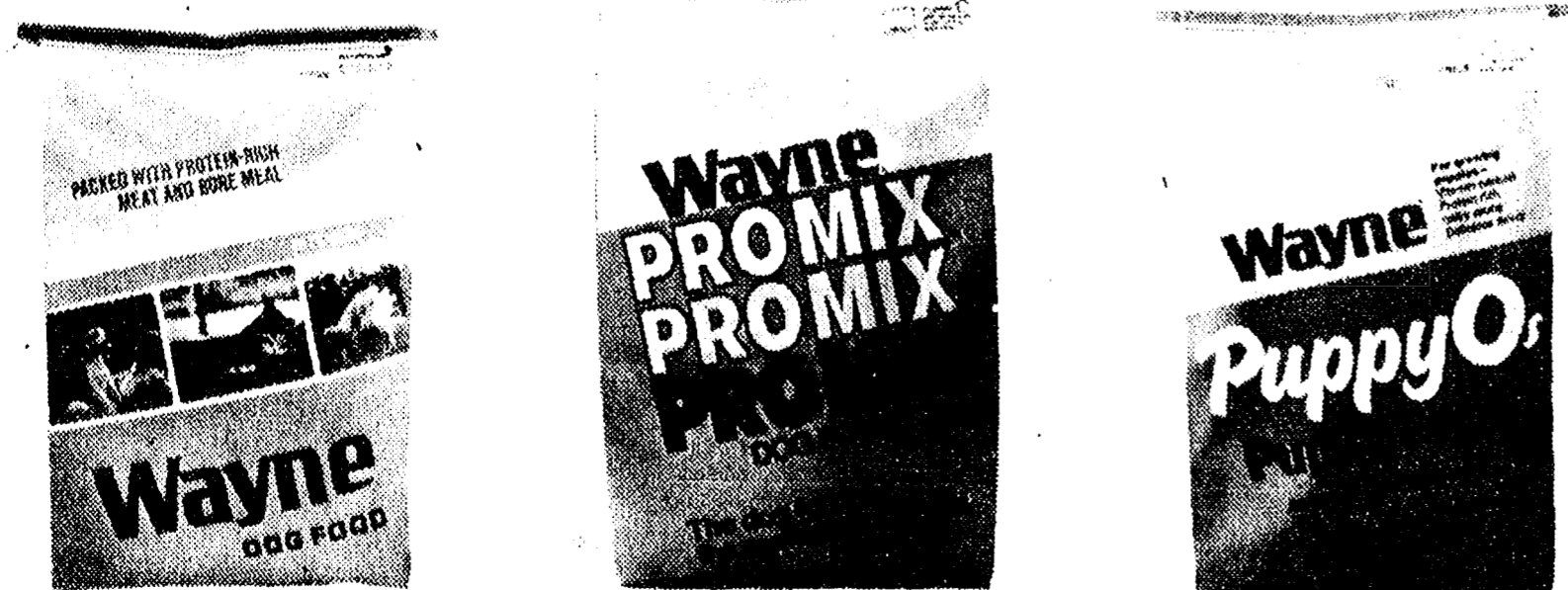
**You Are Invited to Our
APPRECIATION DAY
SATURDAY, MARCH 1**

Supplier representatives will be present to assist you
in your feed needs from 9 a.m. to 5 p.m.

LUNCHEON 11 a.m. to 1 p.m. - DOOR PRIZES

- Ralph and Ken McCalla

SPECIAL DISCOUNTS WILL BE OFFERED ON FEEDS



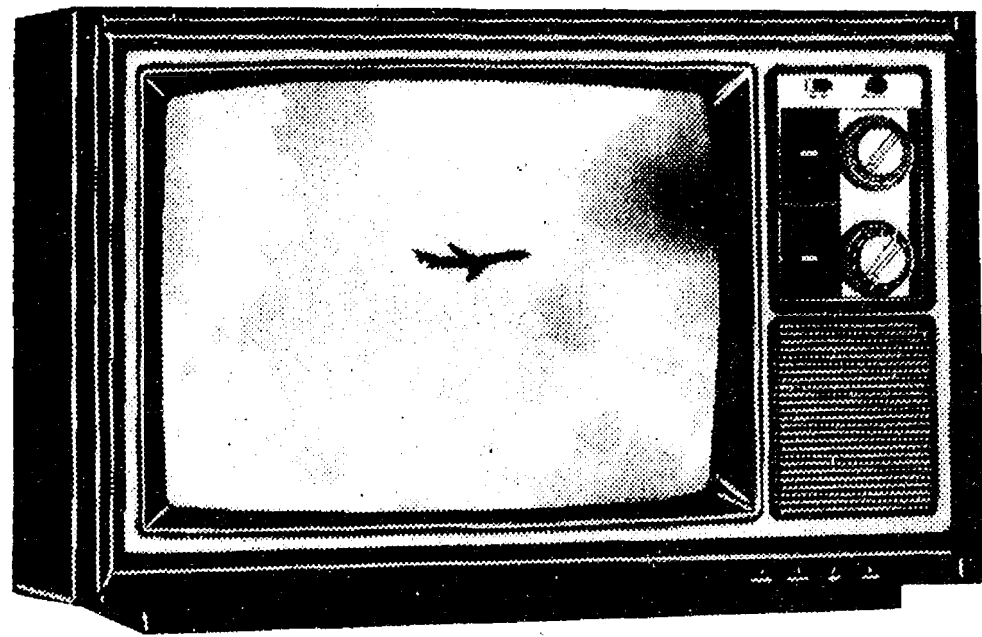
**SPECIAL
PRICES**

\$2.00 OFF on 50-lb. bag Wayne Dog Food, 50-lb. bag Wayne Pro-Mix or 40-lb. bag Wayne Puppy Os
Reg. Price Wayne Dog Food \$11.75
Reg. Price Wayne Pro-Mix \$10.75
Reg. Price Wayne Puppy Os \$11.00

MAGNAVOX

25th Annual Sale

LAST 4 DAYS!



BK 4166

SAVE \$80!

19" DIAGONAL PORTABLE COLOR TELEVISION

- Automatic Fine Tuning
 - 100% Solid-State Chassis
 - Negative Matrix Picture Tube
- Manufacturer's suggested retail price \$439.

SALE PRICE

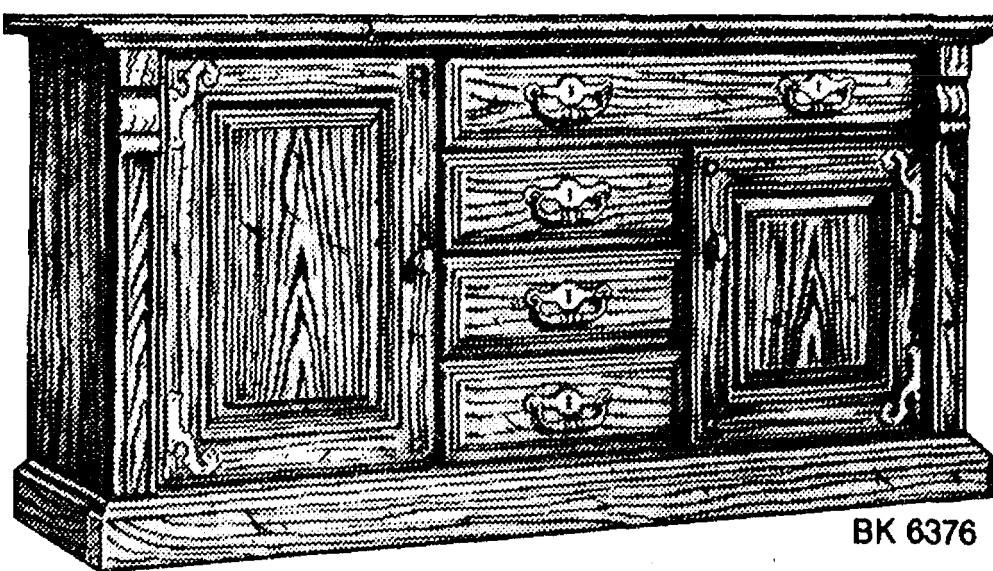
\$359

DECORATOR AUDIO SYSTEM

- AM/FM/FM Stereo Receiver
 - 8-Track Record/Playback Deck
 - 3-Speed Record Changer
 - Mediterranean Styled Cabinet
- Manufacturer's suggested retail price \$399.

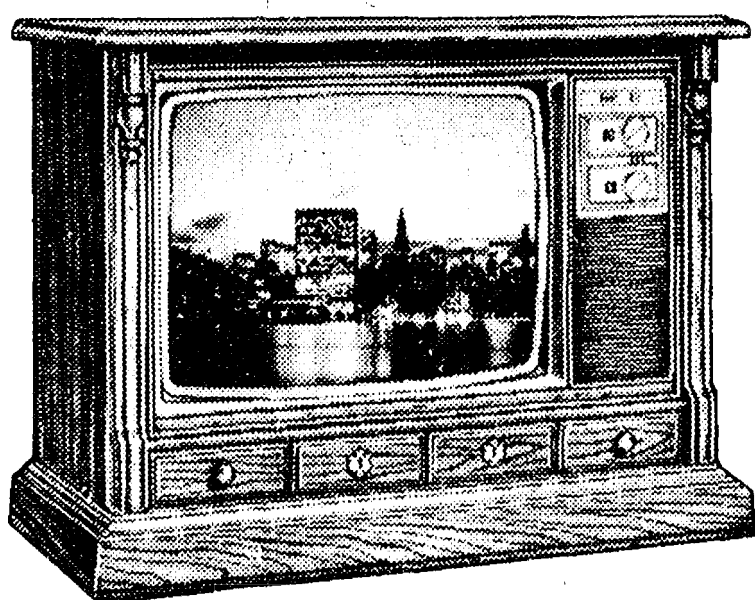
SALE PRICE

\$299



BK 6376

SAVE \$100!



BK 4824

SAVE \$100!

25" DIAGONAL COLOR CONSOLE

- Videomatic
 - One-Button Color Tuning
 - 100% Solid-State Chassis
- Manufacturer's suggested retail price \$649.95.

SALE PRICE

\$549

MAGNAVOX
MAGNAVOX
MAGNAVOX
MAGNAVOX
MAGNAVOX
QUALITY IN EVERY DETAIL

AM/FM POCKET PORTABLE

- Thumb Wheel Controls
- Built-in AM Antenna
- Telescopic FM Antenna
- Manufacturer's suggested retail price - \$19.95.

AL 070 **\$7.77**

Only 12 per store! Only **\$7.77**

DOORBUSTER SPECIAL!

Manufacturer's suggested retail price as of January 2, 1980. Prices optional by dealers. All dealers may not have all products.

HEYDLAUFF'S

113 N. Main St., Chelsea

Ph. 475-1221



C-H-A-M-P-S: Kim Smith and Ted Merkel, winner and runner-up, respectively, of the recent Beach Middle school spelling bee, strike a victory pose with Beach Principal Alan Conklin.

Smith, an 8th grader, will compete March 26 in the Michigan Regional Spelling Bee, hoping for a chance to move on to the National Spelling Bee in Washington, D. C., later in the year.

Kim Smith Wins Beach School Spelling Bee Title

Wednesday, March 26, Beach school eighth grader Kim Smith will represent the school at the Michigan Regional Spelling Bee.

The contest is sponsored by The Detroit News and includes winners from eight counties in southeastern Michigan. The regional winner will then be eligible to participate in the National Spelling Bee in Washington, D.C., May 26.

The local competition began with grade level spelling bees the first week in February. Susan Overdorf was first in the sixth grade spelling bee and Dan Bellus was runner-up. Finishing behind them were Shawn Quilter, Dan Degener, Jim Cook, Mark Freitas, Rob England, Brian Robeson, Raeshelle Bery and Kim Clouse.

Seventh grade winners were Cindy Issel, first, and Laura Keopole, runner-up, followed by

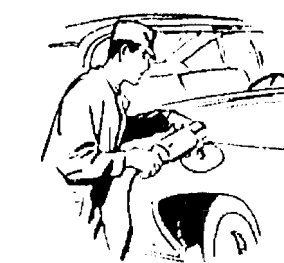
Tom Schaff, Brian Ackley, Ricky Proctor, Mark Henson, Scott Miller, Marie Bulick, Mary Ann Richardson and Becca Lee.

The ten top eighth grade spellers are Kim Kleis, first; Mary Hellner, runner-up; Amy Finkbeiner, Kim Smith, Becky Schluppe, Jim Weber, Ted Merkel,

Lisa VonWald, Dan Waldyke and Lori Tressler.

These 30 students then competed against one another in an all-school spelling bee held Feb. 12, in which Kim Smith emerged as the Beach winner. Eighth grader Ted Merkel is the first runner-up.

ROBERTS PAINT & BODY



"We do our best to satisfy"

20416 Old US-12 West
Chelsea, Mich.

Ph. 475-1149

Open 8 a.m.-5 p.m. Daily

Pinckney Cagers Blast South Lyon

A season record total of 54 fouls highlighted two-fisted basketball play between Pinckney and South Lyon Friday night, Feb. 22, as the Pirates thundered to an 85-58 victory.

The game pivoted on a disastrous South Lyon third quarter, which saw Pinckney scoring 36 points behind the aggressive shooting of Mark Evans, who totaled 19 for the game. Their opponents gained only 7 in that period. Free throws also went the Pirates' way, as they shot 55 percent, hitting 27 of 40 tries. The Lions sank 20 of 32.

The teams split the fouls evenly, collecting 27 each.

Pinckney goes into this Friday's square-off with Brighton over the Kensington Valley Conference title with a season record of 8 and 1.

The U. S. economy will create nearly 20 million new jobs by 1990, and well over half will be in white collar occupations, according to estimates published by the U. S. Department of Labor's Bureau of Labor Statistics.

Truck Weight Restrictions

of this Board and by virtue of the applicable sections of the Michigan Vehicle Code being Act 300, Public Acts of 1949 as amended, we impose springtime axle load restrictions effective at 6:00 a.m. Wednesday, Feb. 27, 1980.

The Washtenaw County Road Commission deems it necessary to preserve the roads under the jurisdiction. The allowable truck loadings are as follows:

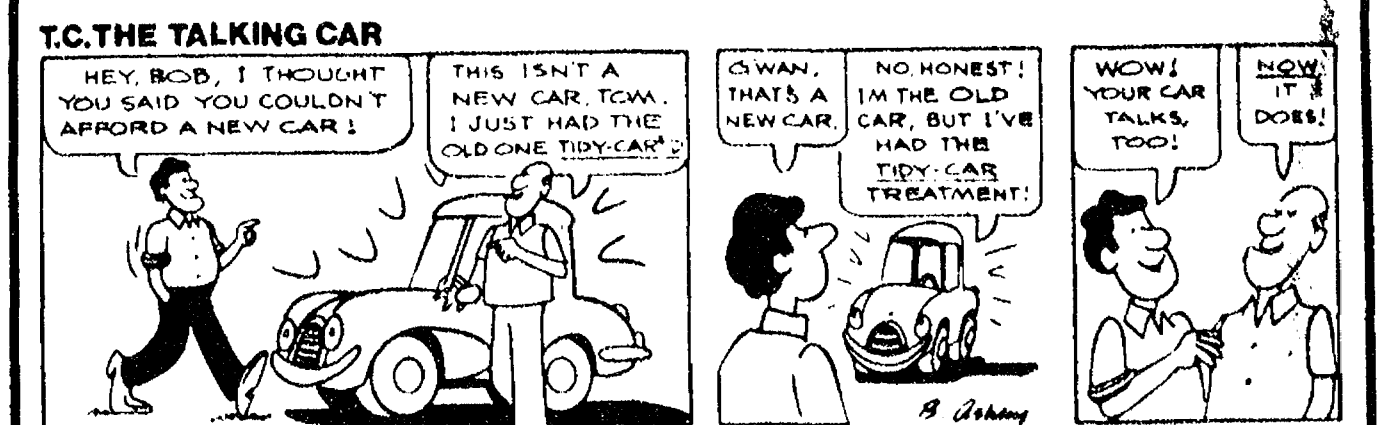
MAXIMUM ALLOWABLE GROSS AXLE LOADINGS

Spacing Between Axles	Concrete	Black-Top & Gravel
9 feet or over	13,500 pounds	11,700 pounds
More than 3 1/2 feet, but less than 9 feet	9,750 pounds	8,450 pounds
When less than 3 1/2 feet the combined weight shall not exceed	13,500 pounds	11,700 pounds
Maximum load on any wheel shall not exceed: (pounds per inch of tire width)	525 pounds	450 pounds

MAXIMUM TRUCK SPEED

No truck, tractor or tractor with trailer, nor any combination of such vehicles with a gross weight loaded or unloaded in excess of 5,000 pounds, shall exceed a speed of 50 miles per hour which shall be reduced to 35 miles per hour during the period when reduced loadings are being enforced.

Washtenaw County Road Commission



How would you like to have a car that stayed shiny and repelled dirt? A car that looked like it just rolled out of the showroom, month after month.

If your car is brand new, we'll keep it looking that way. If it's showing its years, we'll clean and shine the years away. And best of all, we'll do the work at your convenience. We pick up and deliver.

Tidy Car's Preserv-A-Shine can do just that - give your car a showroom shine and preserve it for the life of the car.

The Preserv-A-Shine process includes initial treatment and an annual cleaning and restorant job. And it means you'll never have to wax your car again.

TIDY CAR

Independent Operator
Tompkins Elegant Autos

475-2952

Legal Notices 18 Legal Notices 18 Legal Notices 18

MORTGAGE SALE - Default having been made in the terms and conditions of a certain mortgage made by Bruce A. Serwin, a single man, of Ann Arbor, Washtenaw County, Michigan...

NOTICE OF MORTGAGE SALE WHEREAS, default has been made in the terms and conditions of one certain mortgage made and executed by David C. Batton and Barbara J. Batton, as his wife and in her own right...



KENT NOLL is this week's featured swimmer. A freshman who has improved immensely all year, Kent had best times this week in the 50 free, 28.35; 500 free, 6:30.92; in the 100 free, 1:02.22; and 100 breaststroke, 1:28.552. Kent also qualified as a first alternate in the 500 free at Saturday's Chelsea Invitational.

NOTICE FREEDOM TOWNSHIP PROPERTY OWNERS The Washtenaw County Equalization Department has indicated that they will impose a factor of 1.21 (an overall increase of 21% in the valuation) on property located in Freedom Township for the year 1980.

NOTICE FREEDOM TOWNSHIP PLANNING COMMISSION NOTICE OF PUBLIC HEARINGS TO BE HELD ON MARCH 4, 1980 At the Lima Township Hall

LYMA TOWNSHIP PLANNING COMMISSION NOTICE OF PUBLIC HEARINGS TO BE HELD ON MARCH 4, 1980 At the Lima Township Hall

OFFICIAL NOTICE REGULAR MEETING OF THE DEXTER TOWNSHIP BOARD will be held Tuesday, March 4, 1980 - 7:30 p.m. at the Dexter Township Hall, 6880 Dexter-Pinckney Rd.

Subscribe to The Chelsea Standard

SYLVAN TOWNSHIP BOARD OF REVIEW Notice is hereby given to all persons liable to assessment for taxes in the TOWNSHIP OF SYLVAN County of Washtenaw, State of Michigan

SYLVAN TOWNSHIP PLANNING COMMISSION NOTICE OF PUBLIC HEARING TAKE NOTICE that the Sylvan Township Planning Commission will hold a Public Hearing on Monday, March 3, 1980, at 8:00, in the evening at the Sylvan Township Hall, 112 West Middle Street, Chelsea, Michigan 48118.

LYNDON TOWNSHIP BOARD OF REVIEW Notice is hereby given to all persons liable to assessment for taxes in the TOWNSHIP OF LYNDON County of Washtenaw, State of Michigan

DEXTER TOWNSHIP BOARD OF REVIEW Notice is hereby given to all persons liable to assessment for taxes in the TOWNSHIP OF DEXTER County of Washtenaw, State of Michigan

Census Takers Needed More applicants for paid, temporary work as census takers during the nation-wide 1980 census are urgently needed in this area, according to Michael Berla, manager of the Regional Census Center.

Extension Service Offers Free Class On Arthritis Problems Chances are, if you yourself are not suffering from one of the many forms of arthritis, you know others who are. To learn more about this common disorder plan to attend a free class sponsored by the Co-operative Extension Service, Wednesday, March 5 at 1:30 p.m. in the Extension Meeting room at the Washtenaw County Service Center, 4133 Washtenaw Ave., Ann Arbor.

EAT RIGHT and LIVE LONGER

Youth Begins at Breakfast

By LELORD KORDEL
Number Nine of a Series

A 64 year old student of mine stopped me on the street and, with a twinkle in her eye, said, "Guess what? I'm whistle bait again."

"I was walking along the beach in shorts, when a couple of college students drove up and started whistling—you know, real wolf whistles."

This was today's healthy woman talking. But how well I recalled our first meeting ten years earlier. Her husband's recent death came as a great shock. She stopped caring what happened to her.

To cook only for herself, seemed too much trouble. She resorted to eating snacks. Her nutritional intake became very lopsided.

As a result she lost weight. Her arms and legs became scrawny, emaciated. Her torso was distressingly lumpy from poor muscle tone.

There was nothing organically wrong, yet she was listless, dull-eyed, bored. She had lost interest in life.

But now, ten years later, her figure, filled out, was straight and slender. I could well understand the college boy's whistles. It was such a simple thing, as so often is the case.

Her "recovery" came about when she learned the importance of a good breakfast. It was hard trying to convince her.

IMPORTANT MEAL

"I consider breakfast to be the most important meal of the day," I had told her. "It is exactly what its name means—the breaking of the night's fast. As such, it should be given the time and attention it deserves."

Why is breakfast so important? Because the beginning of the day is the time when the body needs the most energizing fuel. That is, if it is to function at maximum efficiency.

You cannot expect a hasty, ill-planned breakfast, a sugary mid-morning snack, and a quick, protein-poor lunch to keep your body fueled and energized throughout the very hours of the day when you put the greatest strain on your nerves, brain cells and muscles.

The habit of saving up all day for a heavy meal at night is what puts the "spare tire" around the waistline.

Because you go to bed shortly after the evening meal, your body does not require the energy it does throughout your long waking hours.

For this reason, the food consumed at this late meal is stored rather than burned. Stored as fat deposits around the liver, the heart and the arteries.

This is why I teach that your breakfasts should be high protein meals. Not stop-gap snacks.

Your evening meal can be a light one, so unburned energy foods are not allowed to store up overnight as unwanted fat around the waistline. Or in the most dangerous of all places—the arteries.

Breakfast is the nutritional foundation of your activities for the next twelve hours. Your day can be no better than its foundation.

Her muscle tone improved. She stood straighter. There was no hint of 'abdominal droop' that formerly made her figure lumpy and unattractive.

Even hair and fingernails improved. Arms and legs filled out. She began bursting with new energy.

GENERAL SUGGESTIONS

Here are a few general suggestions:

• First: Take your time while eating breakfast, even if it means getting up half an hour earlier. You cannot get the maximum good out of breakfast if one eye is on the clock.

• Second: Eat all the fruit you want at breakfast, preferably whole fruit. It is an excellent way of preparing the stomach for the other food to follow.

TO BUILD A GOOD DAY YOU NEED A GOOD FOUNDATION



• Third: Have one or two high protein foods. The healthy Argentinians enjoy a pan-broiled steak and an egg for their first meal of the day. You might like this on occasion.

Scrambled eggs fortified with skim milk powder for extra protein can keep you going all morning.

Two boiled or poached eggs with a helping of cottage cheese, or a cube of Cheddar, is another idea.

These are only suggestions to help you get started according to your own tastes.

GREATER ENERGY

This type of breakfast will give you energy without a feeling of stuffiness. This is because smaller amounts of high-protein foods more readily appease the appetite than the bulky (and high-calorie) carbohydrates.

My 64-year old student had taken this advice. Within a month she perked up and started eating three regular meals a day.

Her muscle tone improved. She stood straighter. There was no hint of 'abdominal droop' that formerly made her figure lumpy and unattractive.

Even hair and fingernails improved. Arms and legs filled out. She began bursting with new energy.

Is it any wonder the college boys whistled as she walked along the beach in shorts? Not bad for 64!

Distributed by Specialty Features Syndicate. All Rights Reserved. Condensed from the book "Eat Right and Live Longer" by Lelord Kordel.

Next: Keeping weight under control. How to get rid of extra pounds OR stay as slim as you are!

Frank Abdon Celebrates His 98th Birthday

Frank E. Abdon, a long-time Chelsea resident, observed his 98th birthday Tuesday, Feb. 26. For the past year he has been a resident of the Evangelical Home in Saline.

On Sunday, family members from Chelsea, including children, grandchildren and great-grandchildren gathered at the home to surprise him with a birthday cake, gifts and cards.

Mr. Abdon's daughter, Florence Gentner, reported that he was in great spirits and thoroughly enjoyed blowing out the candles on his cake.

Born in Kentucky, Mr. Abdon came to Chelsea in 1901 and resided here until last year when he moved to the Evangelical Home.



NEW LIONS: Chelsea Lions Club inducted three new members at their regular bi-weekly meeting held at the Chelsea Community Hospital on Feb. 5. Officiating at the ceremony was District Governor Bob Myers of Jackson. Tom Dmoch, charter president of the Chelsea club, was noted for having sponsored a total of eight new members since the club was chartered in

1977. Shown above, standing, are District Governor Myers, Chelsea Lions president Brent Michelsen, new members Vince Spade and Jim Spencer, sponsor Dmoch, new member Don Bauer, and sponsor Don Kvarnberg. Seated are Past District Governors Ev Huttenlocher and Paul King. With the addition of the new Lions, the club roster now stands at 50 members.

Manchester Cagers Down Addison, 71-54

Manchester's varsity cagers upped their record to 6-11 over-all and 3-8 in the Lenawee County Athletic Association as they trounced Addison 71-54, Friday night.

Seniors Jeff Geiger and Dennis Helfrich played their last home game, as Nick Krzyzaniak led with 24 points. Tom Malcolm and Geiger each had 12 points and Helfrich bowed out of varsity play with 10.

Brian Defay had 19 for Addison, which is now 4-13 over-all and 3-8 in the LCAA.

Subscribe today to The Standard.

Senior House Activities

Week of March 3-7
Monday—Hostess meeting, 1 p.m.; antiques, 2 p.m.
Tuesday—Cards, 1 to 4 p.m.
Wednesday—Bowling, 1:30 p.m.; fitness classes, 1 p.m.; sewing, 1 p.m.
Thursday—Golden Pass photos taken, 2 to 2:30 p.m.; bridge, 1 p.m.; stained glass, 1:30 p.m.
Friday—Special Activities Committee, 1 p.m.

Telephone your club news to 475-1371

Roy Weber Elected to FS&L Advisory Council

Roy E. Weber, president and corporate executive officer of Great Lakes Federal Savings, was recently elected to the Federal Savings and Loan Advisory Council as the 1980-81 representative for Michigan and Indiana.

Weber was elected by the Board of Directors of the Federal Home Loan Bank Board in Indianapolis.

The 12-district Advisory Council represents the views of the savings and loan business to the Federal Home Loan Bank Board in Washington, D. C.

Co-Rec Volleyball Organized for Teamless Players

Area adults who would like to play in a co-rec volleyball league but who do not have a team affiliation may sign up for a team until 5 p.m. Feb. 22 at the Ann Arbor Recreation Department Office, 2250 S. Seventh St.

League action begins Monday, March 17 at Scarlett Intermediate School. Game times are 7:45 p.m., 8:55 p.m., and 10:05 p.m. Co-rec teams play each Monday for 10 weeks.

For more information, call Carol Wall, 994-2292.

Readers Can Buy "Eat Right" Book By Lelord Kordel

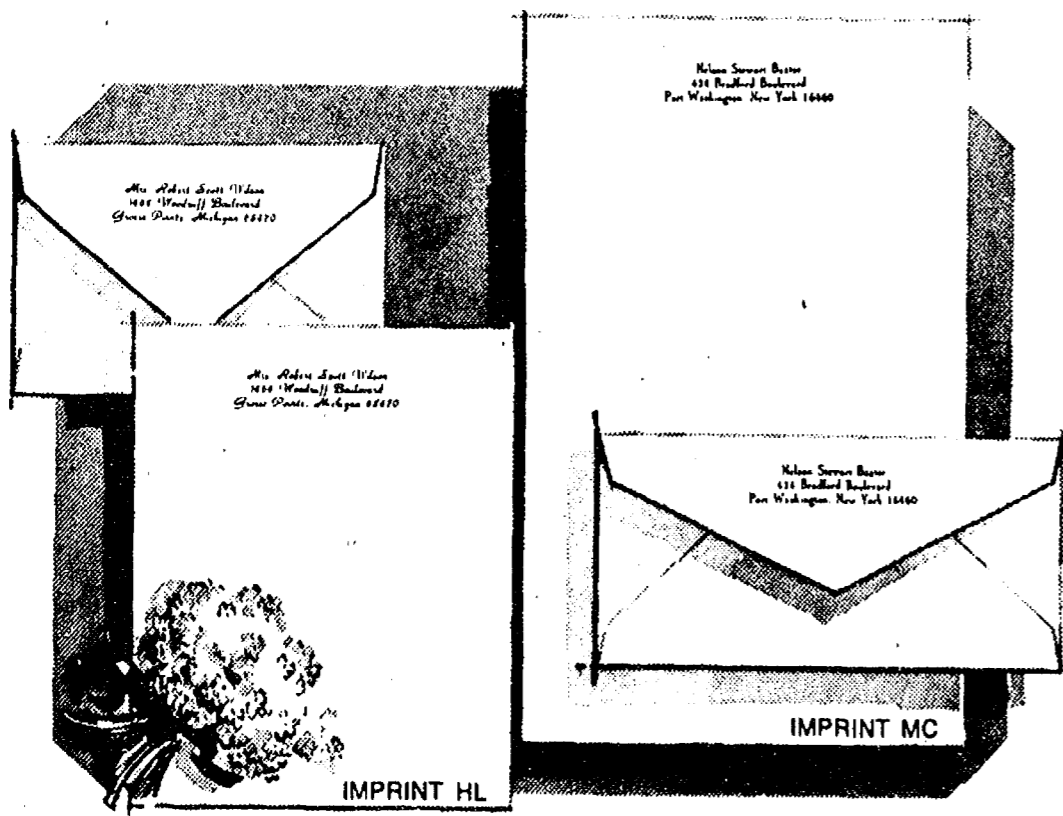
The "Live Longer" articles appearing in this newspaper are only condensations from Lelord Kordel's 144-page book which contains so much more — including diets, charts, other facts to help you eat right and look younger, live longer.

To get your copy, send \$1.00 cash or check to: Lelord Kordel Book, c/o Name of This Newspaper, 17255 Redford Ave., Detroit, Mich. 48219.

Please allow 3 weeks.

You Read It First in The Standard!

The Chelsea Standard



February Sale... Save 50%

Rytext Hand Craft Vellum, Now \$7.95

Regularly \$16.00. The luxurious, damask-smooth personalized stationery you'll use with pride. Choose the paper size and color that suits your writing taste. Select Princess (5 3/4 x 7 3/4) or Monarch (7 1/4 x 10 1/2) size in white, pale blue or soft grey. Choice of imprint styles as shown (HL or MC) printed in deep blue, dark grey or cherry red ink. Beautifully gift boxed: 100 Princess sheets and 100 matching envelopes; or, 80 Monarch sheets and 80 matching envelopes.

Bonus: 50 extra, unprinted sheets for second pages, \$2.00 with order.

THE CHELSEA STANDARD
300 N. MAIN ST., CHELSEA, MICH. 48118

Send _____ boxes HAND CRAFT VELLUM @ \$7.95. Includes □ 50 extra, plain sheets @ \$2 each box.

Imprint Name _____

Address _____

City, State, Zip _____

Choice of Paper (for size and color)

Princess size in: □ White (1000) □ Blue (1050) □ Gray (1060)

Monarch size in: □ White (1200) □ Blue (1250) □ Gray (1260)

Imprint Style: □ HL □ MC Ink Color: □ Blue □ Deep Gray □ Raspberry red

ORDERED BY _____

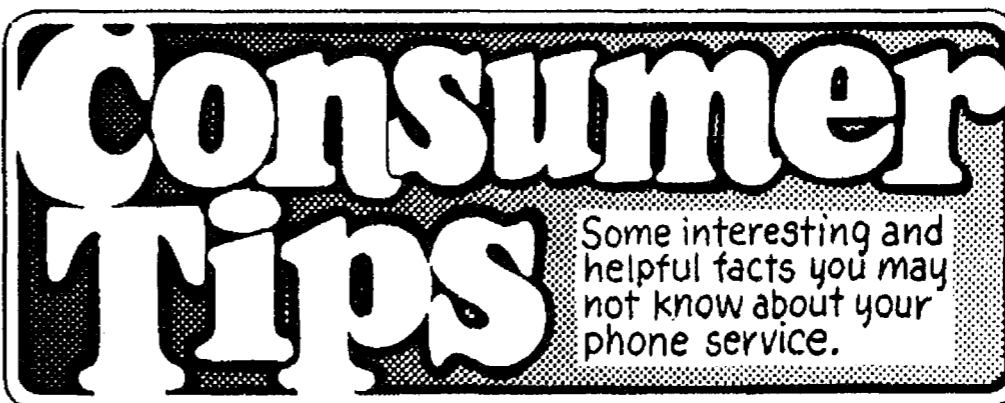
Address _____ Apt. _____

City, State, Zip _____

Account No. _____ Phone _____

□ Charge □ Payment Enclosed Sorry, no C.O.D. or phone orders.

Michigan Bell



EQUIPMENT FOR SPECIAL NEEDS



MICHIGAN BELL EMPLOYEES DON'T WEAR UNIFORMS, SO ASK FOR IDENTIFICATION FROM THEM OR ANY OTHER SERVICE PEOPLE WHO COME TO YOUR DOOR. MICHIGAN BELL PEOPLE ARE ALWAYS GLAD TO IDENTIFY THEMSELVES.

IF A MEMBER OF YOUR FAMILY HAS A HEARING, SPEECH OR PHYSICAL HANDICAP THAT MAKES IT DIFFICULT TO USE A CONVENTIONAL PHONE, ASK YOUR MICHIGAN BELL SERVICE REPRESENTATIVE ABOUT THE EQUIPMENT AND SERVICE OPTIONS BELL CAN OFFER TO HELP.

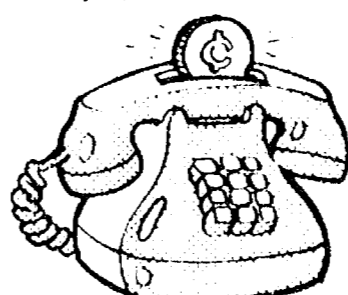


DO YOU KNOW WHAT TO DO WHEN YOU DIAL A WRONG NUMBER LONG DISTANCE?... JUST HANG UP AND DIAL THE OPERATOR RIGHT AWAY. EXPLAIN YOUR MISTAKE AND YOU WON'T BE CHARGED FOR THE CALL.

Did you know that the world's first international telephone communications were established in 1860 with a line linking Detroit and Windsor?



"TWO-PARTY BUDGET SERVICE" SAVES!



THIS SERVICE COSTS A LOT LESS THAN 1-OR-2 PARTY FLAT-RATE SERVICE. FOR A LOW MONTHLY CHARGE YOU SHARE A TWO-PARTY LINE AND HAVE A MONTHLY ALLOWANCE OF LOCAL CALLS. CALL YOUR MICHIGAN BELL BUSINESS OFFICE FOR DETAILS.

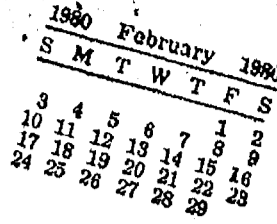
Questions About Your Phone Service?

"HI, I'M ONE OF DOZENS OF MICHIGAN BELL SERVICE REPRESENTATIVES SERVING CUSTOMERS LIKE YOU THROUGHOUT MICHIGAN. IF YOU HAVE ANY QUESTIONS ABOUT YOUR PHONE SERVICE, LOOK ON THE FRONT OF YOUR PHONE BILL FOR THE PHONE NUMBER OF YOUR SERVICE REPRESENTATIVE. HE OR SHE IS READY TO HELP."

You can call on us.



Community Calendar



Boy Scout Troop 476 wants newspapers. Ph. 475-2850 or 475-7547 for pick-up schedule.

Stockbridge American Legion Dance, Saturday, March 1. Music by the Researchers. 9 p.m. to 1 a.m.

Anyone interested in coaching 10- and 11-year-old boys baseball for the Chelsea Recreation Department this summer may contact the department at 475-9830 or 475-9131, ext. 64.

St. Mary's Altar Society, Monday, March 3, 7:30 p.m. Program includes a film. Corporate Communion Sunday, March 2, 8 a.m. Mass.

Olive Lodge No. 156, F&AM, regular communications, Tuesday, March 4, 7:30 p.m.

Chelsea Jaycee Auxiliary annual Cribbage Tournament begins Monday, March 10, 8:30 p.m. at the Village Bakery.

Olive Lodge No. 140, RAM, regular convocation, Thursday, March 6, 7:30 p.m.

Senior Citizens meet third Friday of every month, pot-luck dinner, games and cards. 6 p.m. at Senior Citizen Activities Center on W. Middle St.

Chelsea Co-op Nursery is now accepting applications for fall 1980. Please call Carol Trinkle, 475-8970, or Marcia Hansen, 475-9718.

Home Meals Service, Chelsea. Meals served daily to elderly or disabled. Cost per meal, \$1.50 for those able to pay. Interested parties, call Barbara Branch, 475-7644 or Ann Feeney, 475-1493.

Lima Township Board regular meeting first Monday of each month, 8 p.m., Lima Township Hall.

Recreation Council meets first Wednesday of each month at 7:30 p.m. in the village council room above the police offices. Open to the public.



Everything is inside...

- POWERFUL SUCTION
- TRIPLE-FAN MOTOR
- LONG LIGHTWEIGHT VINYL HOSE
- TELESCOPING EXTENSION WAND
- COMBINATION RUG/FLOOR NOZZLE
- CREVICE TOOL & UPHOLSTERY NOZZLE
- DUSTING BRUSH
- TOE-TIP SWITCH
- LIGHTWEIGHT
- CARRY IT LIKE A SUIT-CASE

\$69.95

COMPLETE WITH ATTACHMENTS

Heydlauff's

113 N. Main Ph. 475-1221

DEATHS

Mrs. Rha Alexander Mrs. Wirt Boyce

Long-Time Chelsea Resident Dies Saturday at Hospital

Mrs. Charlotte (Lottie) M. Alexander, 221 W. Summit St., died Saturday, Feb. 23 at Chelsea Community Hospital. She was 89. Mrs. Alexander was born Dec. 9, 1890 in Ann Arbor, the daughter of Jacob and Anna Gross. She married Rha Alexander in Ontario, Canada, on April 20, 1909. He preceded her in death Dec. 27, 1976.

A resident of Chelsea since 1909, Mrs. Alexander was a member of the Rebekah and OES Chapter No. 108.

Survivors include one niece, Elsie Wier; two grandnephews, Elwin Wier and Frank Gross, all of Ann Arbor.

Funeral services were held Monday, Feb. 25, 11 a.m. at Burghardt-Cole Chelsea Funeral Chapel. OES services were held Sunday at 7 p.m. Burial took place at Oak Grove Cemetery, Chelsea.

Memorial contributions may be made to the American Cancer Society.

Former Lyndon Resident Dies at Ann Arbor Hospital

Beulah M. Boyce, 202 W. Main St., Stockbridge, died Wednesday evening, Feb. 20, at St. Joseph Mercy Hospital, Ann Arbor. She was 90.

Born Aug. 13, 1889 at Cambria to Erwin and Kate (Sanderson) Marsh, she was married Feb. 23, 1912 to Wirt C. Boyce, who preceded her in death Oct. 7, 1952.

Mrs. Boyce was a member of the Stockbridge chapter of OES No. 143, the First United Methodist church, Home Culture Club, Lyndon Extension Club and the American Mothers' Committee.

Surviving are two daughters, Mrs. Elaine Martin and Mrs. Arlo (Shirley) Wasson, both of Mason; four sons, Lloyd of Dexter, A.J. of Gregory, and Wynn and Max, both of Stockbridge; 25 grandchildren, and 38 great-grandchildren.

A daughter, Mrs. Albert (Katrene) Gall preceded her in death.

Funeral services were held Saturday, Feb. 23, 2 p.m. at the Caskey Funeral Home, with the Rev. David Selleck officiating. Burial followed in Oaklawn Cemetery, Stockbridge.

Jeff Daniels Will Appear on Saturday TV

After a number of false starts and false promises from the CBS network, the "Hawaii Five-O" television program featuring local actor Jeff Daniels will be shown Saturday, March 1, at 9 p.m.

Residents who wish to tune in should note that Saturday is not the usual night that "Hawaii Five-O" appears.

Jeff plays one of three graduate students who use radio-controlled airplanes to attempt the theft of the crown jewels of Hawaii's last monarch, Queen Liliuokalani.

Births

A son, Jeremy Jay, Sunday, Feb. 3, to Mr. and Mrs. Roger D. Brown of Chelsea, Maternal grandparents are Mr. and Mrs. Orville Tompkins of Chelsea; paternal grandparents are Mr. and Mrs. Ned Brown of Britton.

A daughter, Katrina Marie, born Feb. 17 at St. Joseph Mercy Hospital, Ann Arbor, to James M. and Paula D. Montgomery, 11364 Ellsworth Rd.

A son, Joshua Daniel, Sunday, Feb. 17, to Paul and Lynda Wallace, 3407 Hannan, Wayne. Maternal grandparents are Victor and Bernice Cekala of Chelsea. Robert and Arlene Wallace of Canton are paternal grandparents. It is the first grandchild for both couples.

Covenant Church Vacation Bible school will be held June 9-13, 10 a.m. to 1 p.m.

Lions Club, first and third Tuesday of every month, 6:45 p.m., at Chelsea Community Hospital.

Chelsea Community Hospital Nutrition Program pre-natal nutrition classes, fourth Tuesday of each month, 6 to 7 p.m. at the hospital. To register, phone 475-1311 (ext. 354). Class is free of charge.

Chelsea Athletic Boosters meet fourth Wednesday of each month in the Chelsea High school cafeteria. 1980 dates: March 26, April 23, May 28.

Sylvan Township Board regular meetings, first Tuesday of each month, 7 p.m., Sylvan Township Hall, 112 W. Middle St.

Tours of Chelsea Community Hospital and surgical center are available for small groups. To arrange for tours, call: Ruby Strieter, 475-2065; Shirley Schable, 475-7625; or Jan Wessinger, 475-1311.

Lamaze childbirth preparation classes are offered continually at Chelsea Community Hospital. To register, call 475-9558 or 475-7484.

Chelsea Communications Club meets fourth Wednesday of each month, 8 p.m., Chelsea Lanes basement meeting room.

Aquatic Club Wins Over Ypsilanti

Another victory for Chelsea's Aquatic Club boosted the group's record to 3-0, as they defeated Ypsilanti Swim Club, 305-207.

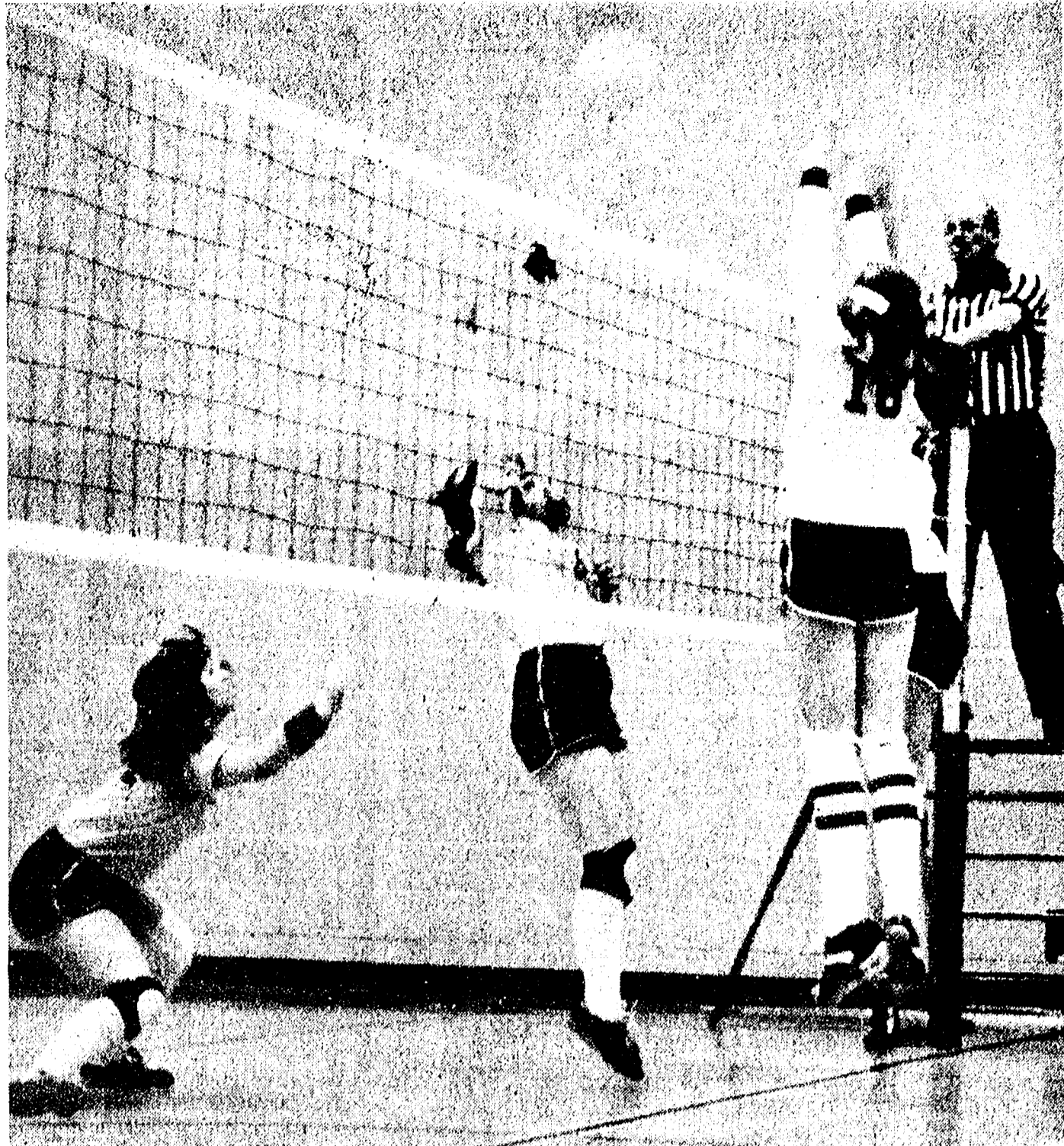
First place finishers in the meet included the following:

8 and under boys—100 yard medley relay: Matt Hubal, Tim Karns, Matt Weis, Brett Paddock; 25-yard breaststroke: Matt Weis; 100-yard free relay: Matt Hubal, Tim Karns, Brett Paddock, Matt Weis.

8 and under girls—100 medley relay: Teresa Lewis, Allison Brown, Molly Thompson, Kellie Kanten; 25 yard breaststroke: Molly Thompson; 100 free relay: Molly Thompson, Sandy Parsons, Teresa Lewis, Allison Brown.

9 and 10 girls—100 medley relay: Cristen Zerhel, Sue Schmunk, Heather Seabury, Beth Paddock; 200 free relay: Heather Seabury, Sarah Weis, Laura Nickles, Laura Stephens.

11 and 12 boys—200 medley relay: Mike Carrigan, Mike Coffman, Scott Pryor, Dan Degener; 50 breaststroke: Mike Coffman;



MOLLY BACON, center, rears back to intercept a Dexter shot in SEC volleyball tournament play last Saturday, as Sue Branham, left,

maneuvers into position. Chelsea lost in two matches to finish sixth in the league.

Area Students Earn Degrees at Western Michigan

A number of local residents are among students receiving bachelor's, master's and specialist degrees from Western Michigan University at the end of the first semester of the recent school year.

Among the fall degree recipients are Steven D. Bennett, 8215 Beeman Rd., who received a bachelor of science degree; Anne Elizabeth Treado, 129 South St., BS; and Christine M. Barnes, 13420 Riker Rd., master of arts.

Charles R. Spensley, 19800 Sharon Valley, Manchester, was the recipient of a bachelor's degree in business administration.

CHELSEA WOODSHED EATERY

WAKE UP WITH US!

With the closing of The Chelsea Restaurant, after years of fine service, where do you eat breakfast downtown?

At The Chelsea Woodshed, of course! Beginning on Monday, February 11th we will be serving a full breakfast menu. In addition to our fine lunches and dinners, you can now wake up with The Chelsea Woodshed, too!

Breakfast served from 7 a.m. until 11 a.m. Monday through Saturday. Closed Sunday.
113 S. Main Chelsea, Michigan
Call 475-1922

Amana

Radarange

MICROWAVE OVEN

WITH **ROTAWAVE COOKING SYSTEM**

\$50 FACTORY REBATE

ENDS TOMORROW, FEB. 29, 1980

HEYDLAUFF'S

113 N. Main St., Chelsea Ph. 475-1221

FISHER SPEAKER SALE

Great Fisher performance in a moderate sized and priced system. The beautiful walnut-grain vinyl enclosure contains an efficient 8" bass reflex woofer, smooth sounding 5" midrange and brilliant 3" tweeter to give you deep bass and clear extended highs. Handles 30 Watts of power. The FS220 just might be all the speaker you'll ever need.

1/2 Off Mfg. Sugg. List Price

MODEL:	SALE PRICE ONLY:
FS 220 30 watt	\$129.95 pr.
FS 230 50 watt	\$159.95 pr.
FS 240 75 watt	\$199.95 pr.

★ 5-Year Warranty
★ Removable Cloth Grills

HEYDLAUFF'S

113 North Main St., Chelsea Ph. 475-1221

Wheel Horse Pre-Season Sale

SAVE \$380.

WHEN YOU BUY A NEW WHEEL HORSE.

"New through March 23rd, 1980, you can save big when you purchase selected new Wheel Horse models."

"It's a value a Scotsman can appreciate."

Jackie Stewart
* 1980, 1979, and 1978 models
* maintenance-free maintenance-free

Was: \$2145
Now: \$1765

Save \$380.00

Model C-85 with 36" mower.
Savings based on mower at \$350.00
(Manufacturer's Suggested List Price)

WHEEL HORSE lawn & garden tractors

110 N. Main, Chelsea Ph. 475-7472
Open 8:30 to 5:30 Daily. Till 8:30 Fri.
Offer good only at participating dealers through March 23rd 1980

Be an instant winner!
Play new

Polly's
MASTERMARKETS

5 CONVENIENT LOCATIONS TO SERVE YOU BETTER!

201 PARK AVE., V.C.L.,
1821 SPRING ARBOR RD.,
960 N. WEST AVE.,
3102 EAST MICHIGAN,
and 1101 M-52, CHELSEA

SUPER 7 JACKPOT

1. Now, one more great reason to shop Polly's

There's a new game in town! It's super easy to play — there's nothing to save, and lots of chances to win! We call it Super 7 Jackpot. But don't look for it everywhere — it's only being offered at (store name) stores, like the one in your neighborhood. And it's just one more reason for you to come in and discover all the special buys, special services and special offers waiting for you, just down the street — at (store name).

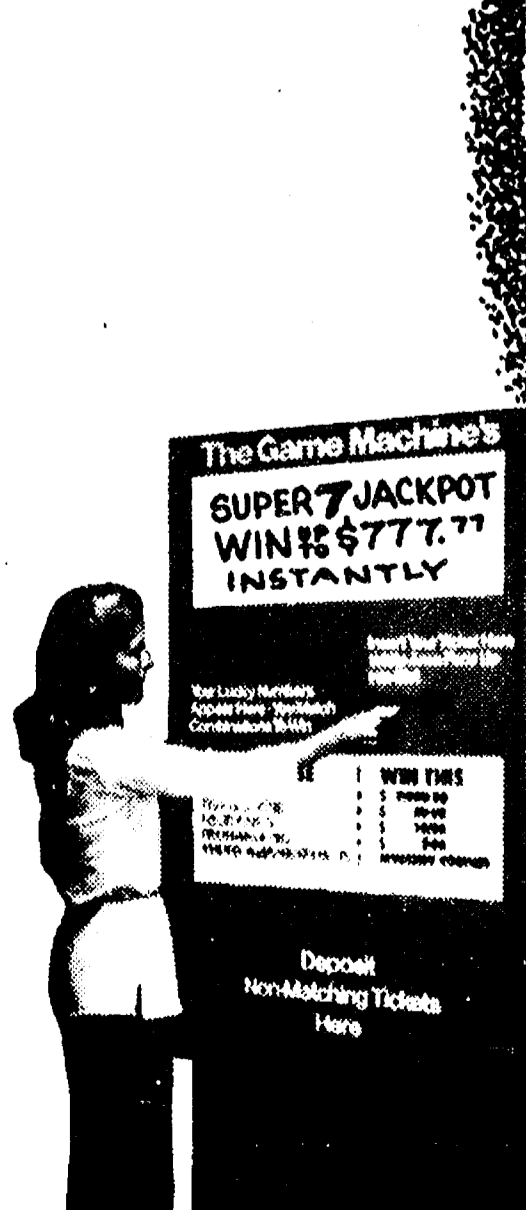
Feelin' lucky? Come on in! You could be an instant winner in our new Super 7 Jackpot game!

It's the simplest game you've ever played!

2. You'll get a Jackpot ticket just like this one every time you visit Polly's



3. Before you leave, get your ticket stamped with numbers by inserting it in our big game machine.



Insert Your Ticket Here
White Area Face Up
Numbers You Match To Win

Simply present your winning ticket to the store manager. Prizes of \$77.77 or more will be paid by check after official verification. Taxes on prizes are the responsibility of the prize winner.

Ticket is void if tampered with in any way. Double stamped, disfigured or mutilated numbers are invalid. Rights reserved to reject any ticket not obtained through legitimate channels or because of computer malfunction. Employees of our company, their immediate families and/or households (including I.R.S. dependents), and our advertising agencies are not eligible to participate. Limit one ticket for each store visit, please. Players must be 18 or older.

4. You're an Instant winner if you get 3, 4 or 5 Sevens, 3, 4 or 5 of the Same Number.

IF THIS COMBINATION APPEARS ON YOUR JACKPOT TICKET	YOU WIN INSTANTLY
77777	FIVE SEVENS \$777.77
33333	FIVE OF SAME KIND \$77.77
7777	ANY FOUR SEVENS \$7.77
7777	ANY FOUR OF SAME KIND \$1.77
3777	ANY THREE SEVENS 77c
73733	ANY THREE OF SAME KIND 3 EXTRA TICKETS

5. The amount you win depends on the combination you get.

Odds are . . . you'll love to play!

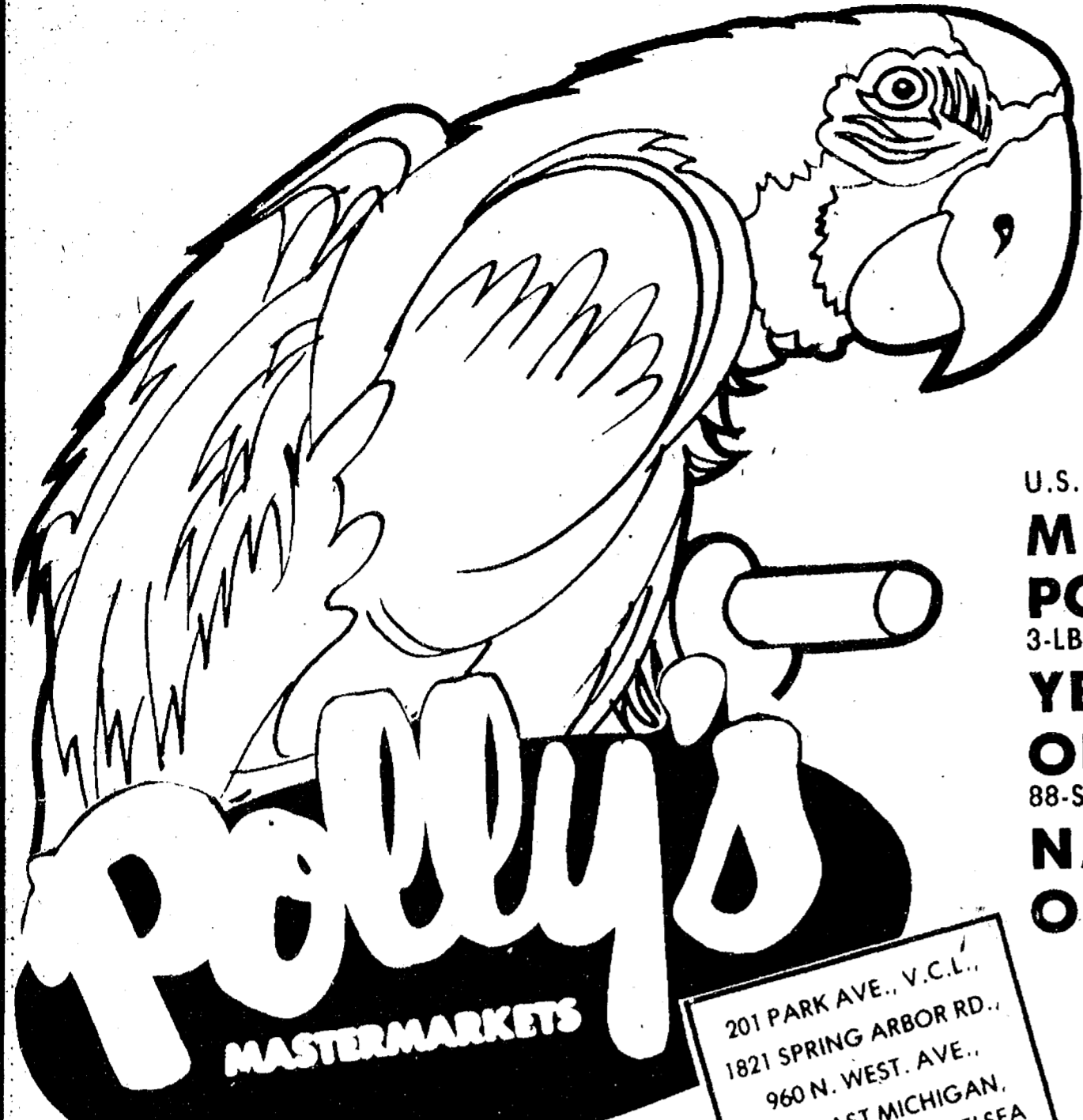
WIN!

WIN!
up to

INSTANTLY!

COMPUTER MATCH	PRIZE VALUE	TOTAL # PRIZES	ODDS 1 TICKET
Five Sevens	\$ 777.77	91	1:100,000
Five of Same Kind	\$ 77.77	819	1:11,111
Any Four Sevens	\$ 7.77	4,095	1:2,222
Any Four of Same Kind	\$ 1.77	38,847	1:247
Any Three Sevens	\$.77	73,387	1:124
Any Three of Same Kind	3 EXTRA TICKETS	758,333	1:12
TOTALS		873,567	1:10

NO PURCHASE NECESSARY. PRESENT WINNING TICKETS TO STORE MANAGER.



Golden Ripe
BANANAS 25¢ Lb.



U.S. No. 1 10-Lb.
MICHIGAN POTATOES ... 79¢
 3-Lb. Bag
YELLOW ONIONS 49¢
 88-SIZE SUNKIST
NAVEL ORANGES .. 8/99¢
 Vine Ripe
RED TOMATOES 39¢
 Cello Pak 7-Oz
COLE SLAW 39¢

5 CONVENIENT LOCATIONS TO SERVE YOU BETTER!

201 PARK AVE., V.C.L.
 1821 SPRING ARBOR RD.,
 960 N. WEST AVE.,
 3102 EAST MICHIGAN,
 and 1101 M-52, CHELSEA
 SALE PRICES GOOD THRU SATURDAY MARCH 1, 1980

Be an instant winner! Play new
SUPER JACKPOT
 WIN UP TO \$777.77

Five of a Kind	Pays \$777.77
Four of a Kind	Pays \$77.77
Four Sevens	Pays \$7.77
Four of a Kind	Pays \$1.77
Three Sevens	Pays .77
Three of a Kind	3 Extra Tickets

JACKPOT ODDS TO WIN
 1 in 1,000,000

in-store coupons

Post 18-Oz. **SUGAR CRISP \$1.09**
 Lipton 4-Pk **CUP-A-SOUP 2 for \$1.00**
 20¢ off Label 5-Oz. **GLEEM 79¢**
 14-Oz. **MINUTE RICE 89¢**
 Cains 12-Oz. **POTATO CHIPS 99¢**
 Tropicana 64-Oz. **ORANGE JUICE \$1.09**
 Mueller's 16-Oz. **NOODLES 59¢**

50-Ct Sheer or Plastic **BAND AIDS 99¢**
 40-Ct 15' Off Label **BOUNCE \$1.69**
 Huggies 12-Ct. **TODDLER DIAPERS \$2.39**
 12-Oz. Baby Ruth or Butterfinger **FUN SIZE BARS 99¢**
 Purina 18-Oz. **SPECIAL DINNERS 59¢**
 Purina 25-Lb. Dogmeat **HIGH PROTEIN \$5.69**
 Purina 20-Lb. **MOIST & CHUNKY \$5.69**

freshlike. SALE!

French Style or Cut
 Green Beans
 Crinkle Sliced
 Beets or Carrots
 Whole Kernel Corn
 or Garden Sweet Peas

Mix or Match
3/89¢
 12/14-Oz. Cans

2-Liter Plastic Bottle
COKE or PEPSI 89¢
 Plus Deposit

Pillsbury's BEST XXXX Flour
Pillsbury Plus Pudding in the mix Cake Mix

VALUABLE COUPON
 SAVE 14¢ Pillsbury Flour 5-lb. 79¢
 LIMIT 1 COUPON PER FAMILY EXPIRES 3/1/80

VALUABLE COUPON
 SAVE UP TO 42¢ Pillsbury Plus CAKE MIXES 18½ oz. 57¢
 LIMIT 2 COUPON PER FAMILY EXPIRES 3/1/80

Buy 2—Save 42¢ With Coupon
PILLSBURY PLUS CAKE MIXES 57¢
 18½-Oz.

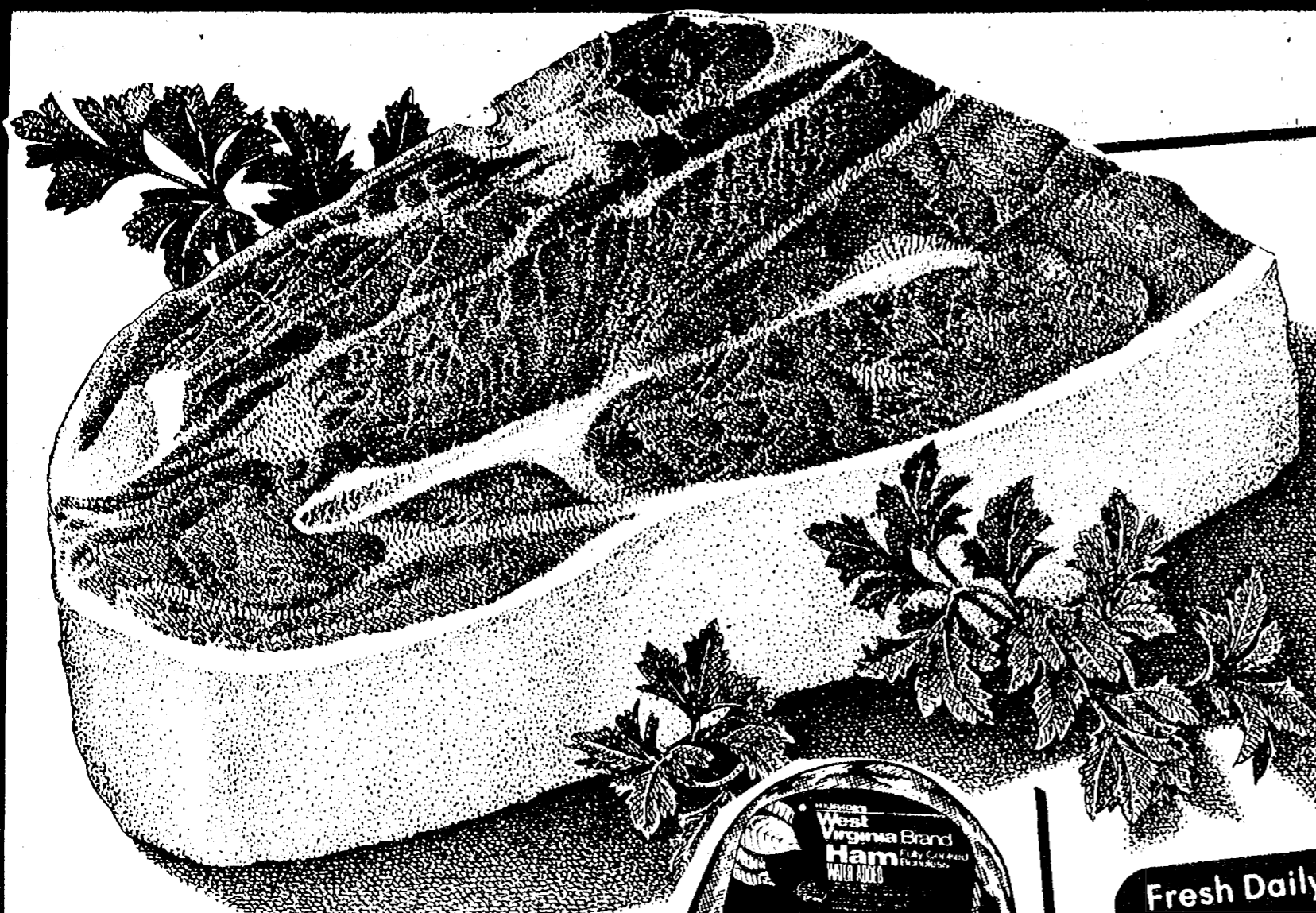
Save 14¢ With Coupon
PILLSBURY FLOUR 79¢
 5-Lb. Bag
 Hungry Jack 2-Lb. Extra Light or Buttermilk Complete
PANCAKE MIX 79¢
 Pillsbury 11-Oz. **PIE CRUST MIX 49¢**

America's **Bake-Off**

Pillsbury 16-Oz. Date, Nut or Banana
QUICK BREAD MIX 99¢
 Pillsbury 14-Oz. **HOT ROLL MIX 69¢**

1-Liter Bottle
7-UP
 Hires Root Beer, Crush Flavors or Schweppes MIXERS

Your Choice **39¢**
 Plus Deposit



Polly's Pride Blade-Cut
CHUCK ROAST
\$1.29

- Polly's Pride Beef
ARM ROAST **\$1.59** Lb.
- Polly's Pride Beef
BONELESS POT ROAST **\$1.69** Lb.
- Polly's Pride Beef
CHUCK STEAK **\$1.49** Lb.
- Polly's Pride Beef
STEW MEAT **\$1.79** Lb.

Fresh Daily
ALL BEEF HAMBURG
\$1.39 Lb.

Fresh
STEWING HENS
69¢ Lb.

Wayne Grade A
QUARTERED FRYER LEGS or BREASTS
79¢ Lb.

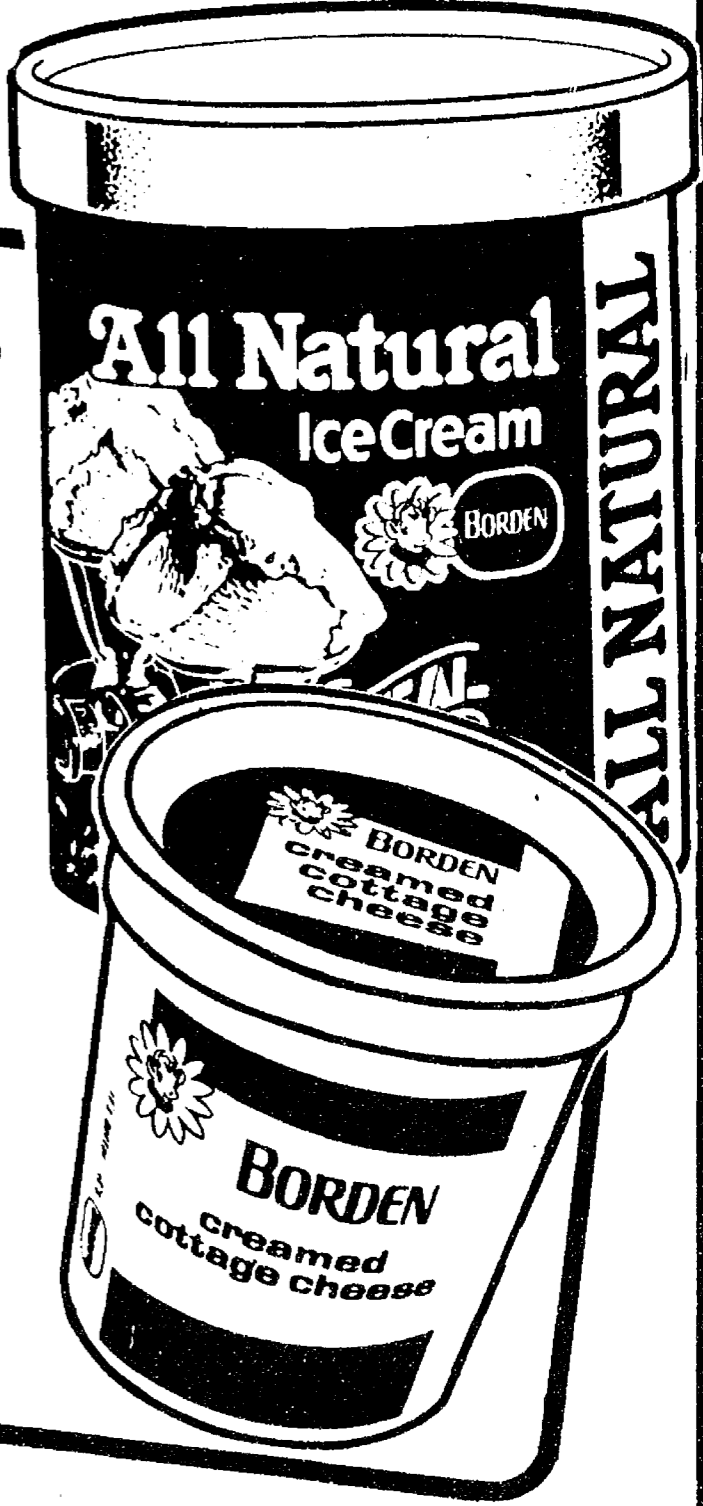
- Farmer Peet's Bulk
LINK SAUSAGE **\$1.59** Lb.
- Farmer Peet's Bulk
RING BOLOGNA **\$1.39** Lb.
- Farmer Peet's
BRAUNSWEIGER **69¢** Lb.
- Eckrich
SMOKED SAUSAGE **\$1.99** Lb.
- Eckrich
POLISH SAUSAGE **\$1.99** Lb.

Hygrades 3 to 4-Lb.
West Virginia DELI-STYLE HAM
Fully Cooked Boneless Water Added
\$1.99 Lb.



- Save 60¢ with in-store coupon
West Virginia 24-oz.
SLICED BACON ... **\$1.99**
- Save 40¢ with in-store coupon
West Virginia 1-Lb.
ROLL SAUSAGE... **\$1.29**
- Save 50¢ with in-store coupon
Hygrade's 1-Lb.
HOT DOGS **99¢**
- Save 40¢ with in-store coupon
West Virginia 1-Lb.
SLICED BACON ... **\$1.39**

- Borden 1/2-Gallon
SKIM MILK **69¢**
- Borden 24-oz. Creamed
COTTAGE CHEESE **99¢**
- Borden 1/2-Gallon
BUTTER MILK **69¢**
- Borden 1/2-Gallon Ice Cream
ALL NATURAL SUNDAE CONES **\$2.29**
- Borden 6-Pak
SUNDAE CONES **79¢**



FREE HALF GALLON MILK
when you buy
OREO COOKIES & NESTLÉ QUIK
Chocolate Flavor

See store for details.
Nabisco 19-oz.
OREO CHOCOLATE SANDWICH COOKIES
\$1.19
Nestle 2-Lb.
QUICK
\$2.29

Save 36¢ with in-store coupon
HOSTESS FRUIT PIES
4 for \$1.00

Heinz 32-oz.
TOMATO KETCHUP
79¢

20¢ Off Label 32-oz.
LIQUID JOY
\$1.29

- Queen of Scot 10-oz.
CREAM of MUSHROOM SOUP .4/ **\$1.00**
- Queen of Scot 10-oz.
CREAM of CHICKEN SOUP **4/ \$1.00**
- Kraft 6-oz.
SQUEEZ-A SNAKS **79¢**
- Frank's 32-oz.
FANCY SAUERKRAUT **59¢**
- Planter's 24-oz.
PEANUT OIL **\$1.59**
- 50¢ Off Label 2-oz.
SURE DEODORANT **\$1.25**
- Wondra 10-oz.
SKIN LOTION **99¢**
- 30-Ct.
EXCEDRIN P.M. **\$1.25**
- Bony Size 3 1/2-oz.
OXY SCRUB **\$1.89**

- 20¢ Off Label Thomas
ENGLISH MUFFINS **79¢**
- 10¢ Off Label Schaffers 24-oz.
HILLBILLY BREAD **79¢**
- 10¢ Off Label Schaffers 24-oz.
BUTTERLOAF WHITE BREAD **79¢**
- Rhodes 2-Lb. Twin Pak
ITALIAN BREAD **79¢**
- Sara Lee 7-Ct.
INDIVIDUAL DANISH **\$1.29**
- John's 3-Ct. 16-oz.
SAUSAGE or CHEESE PIZZA **\$1.29**
- Clear Springs 10-oz.
RAINBOW TROUT **\$1.49**
- Gorton's 12-oz. Battered
FISH FILLETS **\$1.79**
- Mrs. Paul's 16-oz.
ONION RINGS **99¢**

Carnation & Contadina

Fun-to-Eat-At-Home SWEEPSTAKES

Entry blanks available at special displays of...

Contadina 8-oz.
TOMATO SAUCE
5 for \$1.00
Contadina 28-oz.
ROUND TOMATOES
69¢

Contadina 14 1/2-oz.
STEWED TOMATOES
39¢



Polly's
MASTERMARKETS

201 PARK AVE., V.C.L.,
1821 SPRING ARBOR RD.,
960 N. WEST AVE.,
3102 EAST MICHIGAN,
and 1101 M-52, CHELSEA

**5 CONVENIENT
LOCATIONS
TO SERVE YOU BETTER!**

ONLY DAILY
8 A.M. - 9 P.M.
SUNDAY
9 A.M. - 6 P.M.

- ☆ QUALITY PRODUCE
- ☆ CHOICE BEEF
- ☆ FRESH BAKED GOODS
- ☆ LIQUOR
- ☆ COLD BEER
- ☆ LOTTERY TICKETS
- ☆ SIDES OF BEEF
- ☆ FRUIT BASKETS
- ☆ KEG BEER
- ☆ CARRY-OUT SERVICE
- ☆ NATIONAL BRANDS
- ☆ LOW PRICES

QUALITY **VARIETY** **SERVICE**